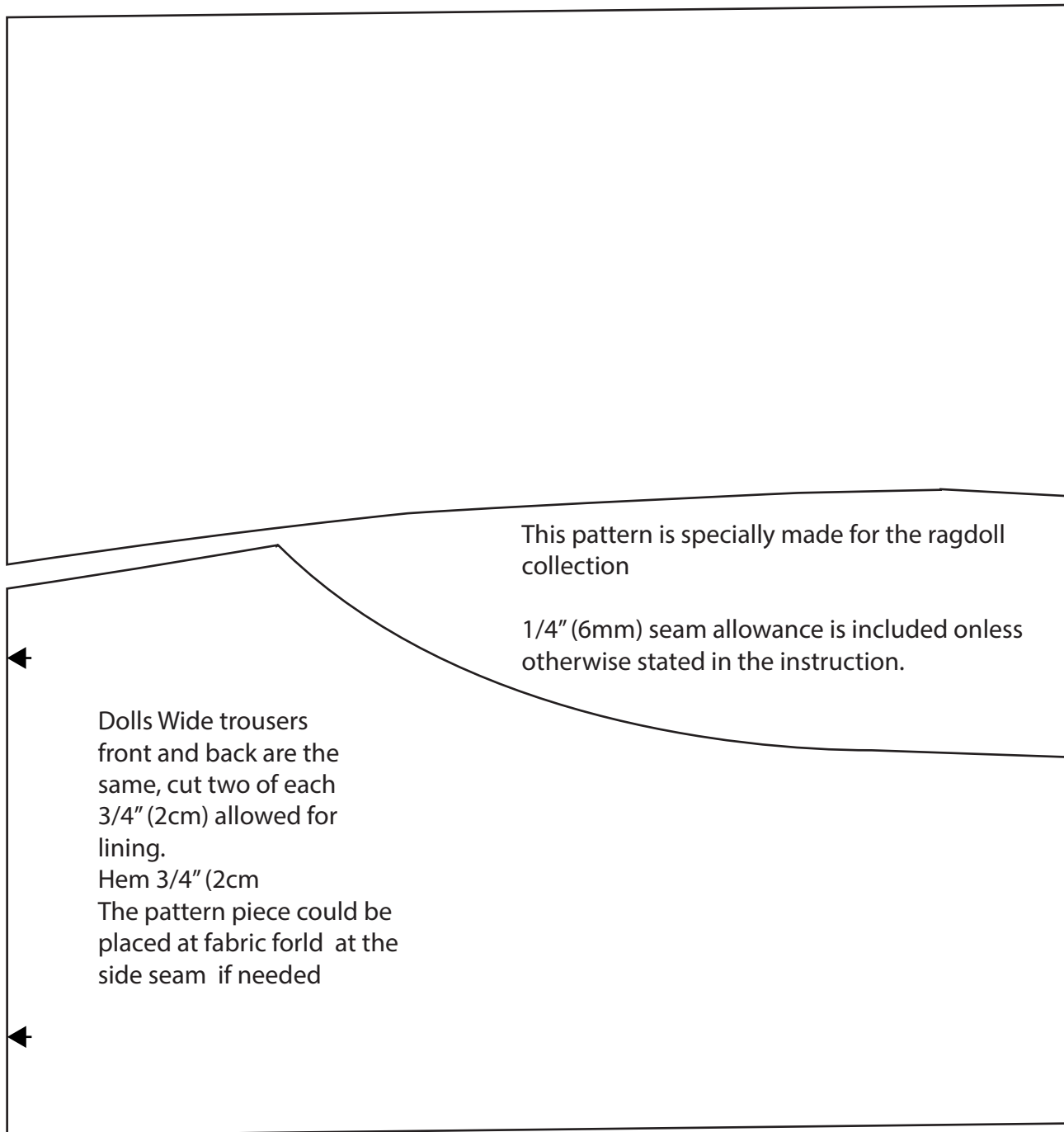
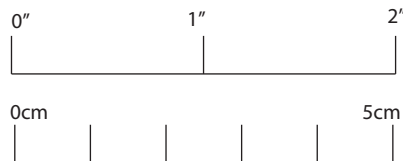


# Dolls Wide Trousers



This pattern is specially made for the ragdoll collection

1/4" (6mm) seam allowance is included unless otherwise stated in the instruction.

Dolls Wide trousers front and back are the same, cut two of each 3/4" (2cm) allowed for lining.

Hem 3/4" (2cm)

The pattern piece could be placed at fabric fold at the side seam if needed