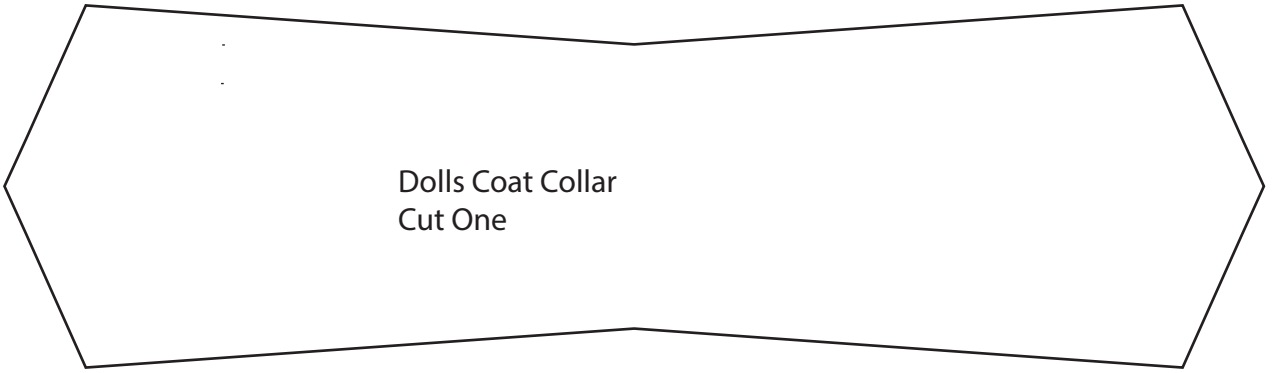
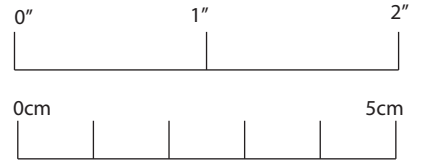
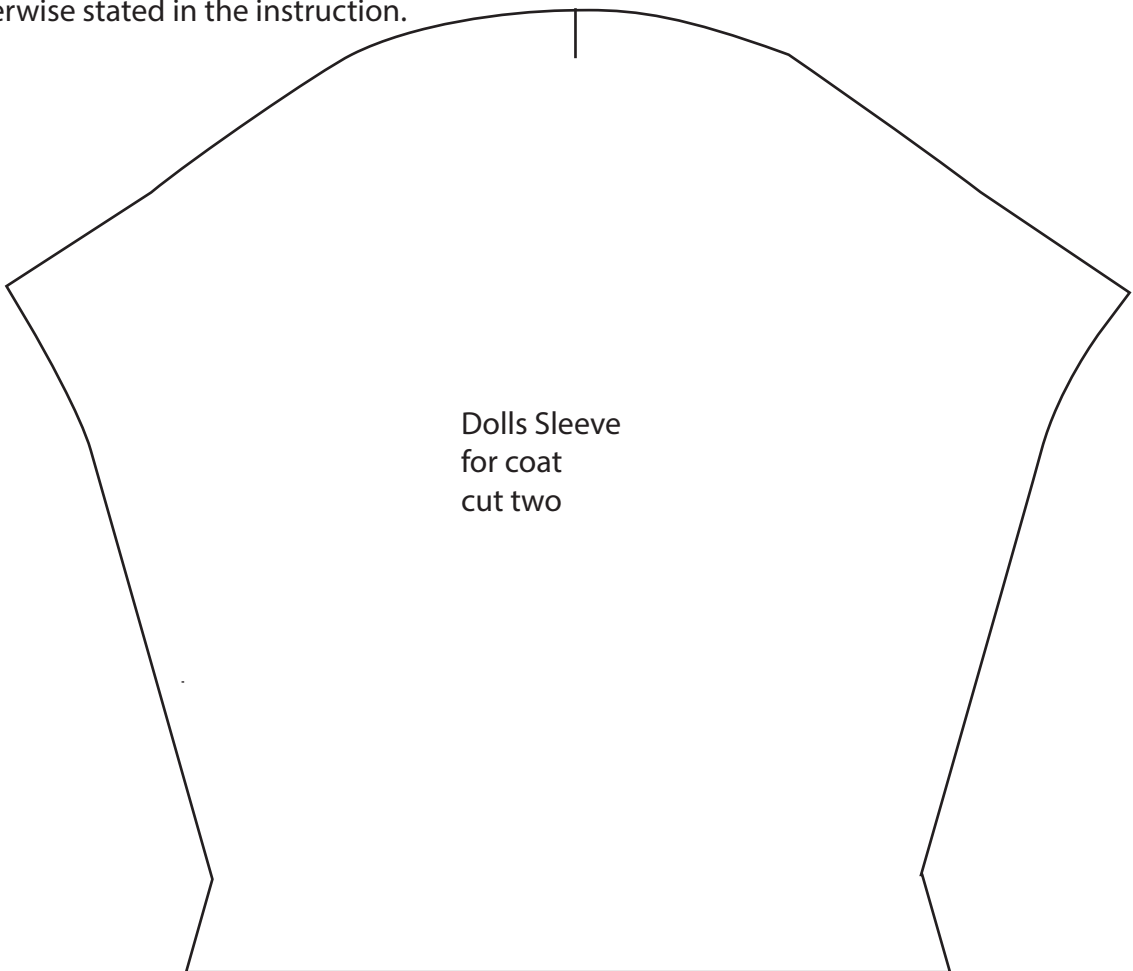


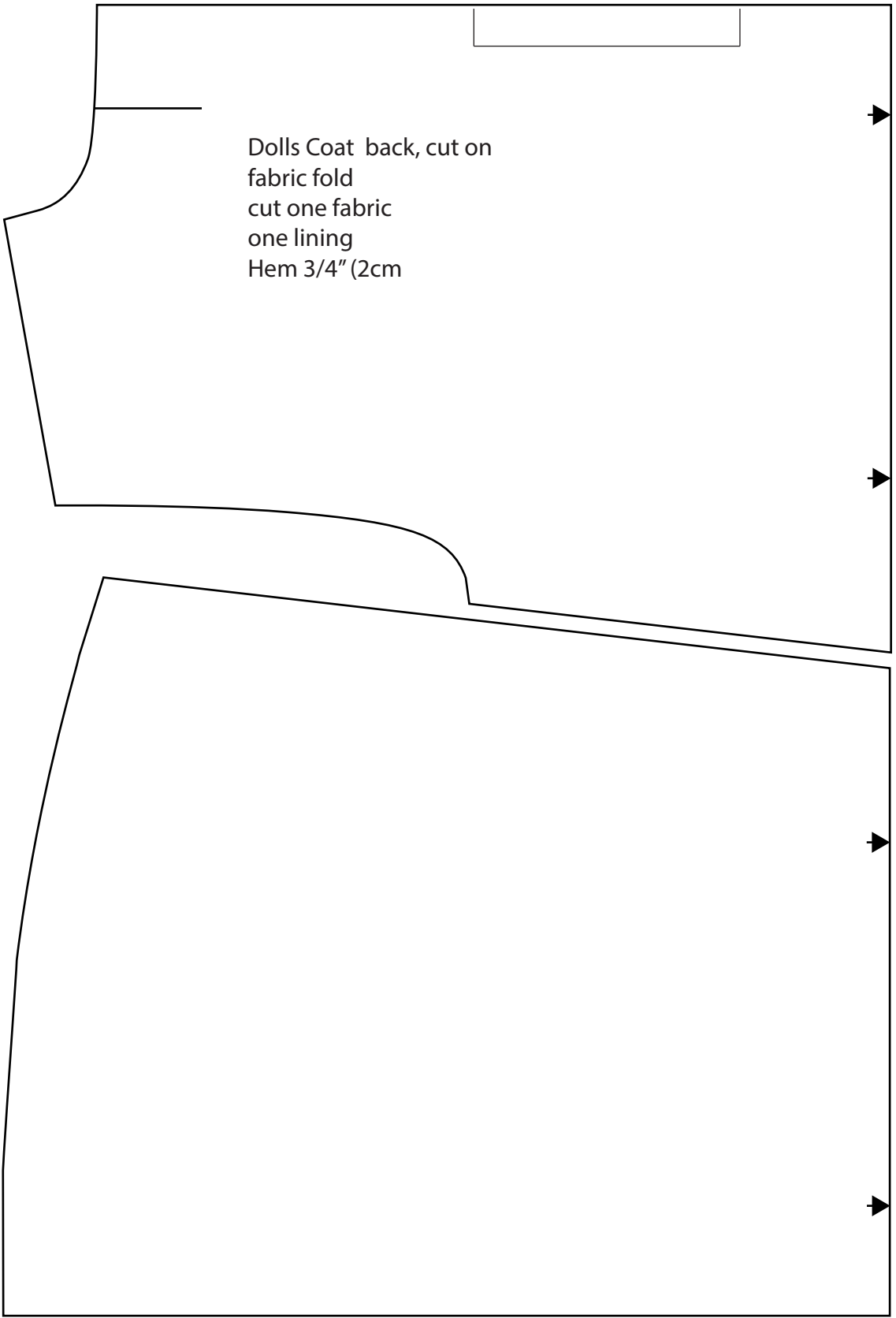
Dolls Coat



This pattern is specially made for the ragdoll collection

1/4" (6mm) seam allowance is included unless otherwise stated in the instruction.





Dolls Coat back, cut on
fabric fold
cut one fabric
one lining
Hem 3/4" (2cm)

Dolls Coat front,
cut two in fabric
cut two in lining
Hem 3/4" (2cm)

