

Appliqué Category



Antigua Patch UC 40-100mm
Satin Column, Satin Line, Running Stitch
Designed for appliqué with one fabric



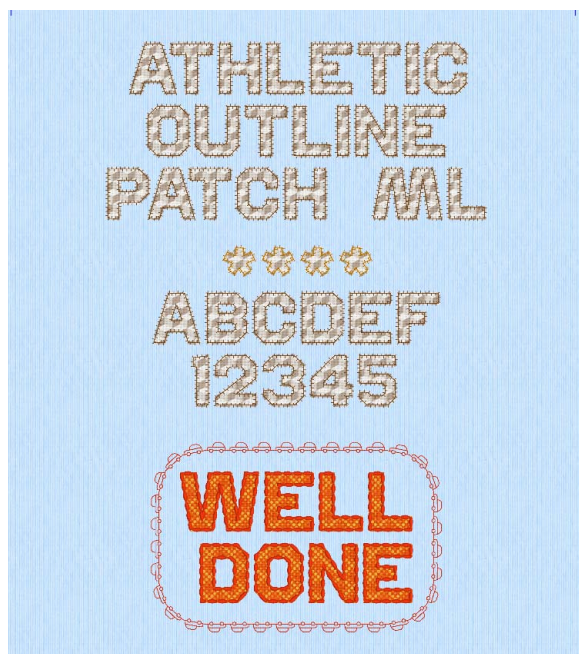
Arial Patch 30-70mm ML
Triple Stitch
Designed for appliqué with one fabric



Athletic Block Patch UC 35-70mm ML
Motif Line
Designed for appliqué with one fabric



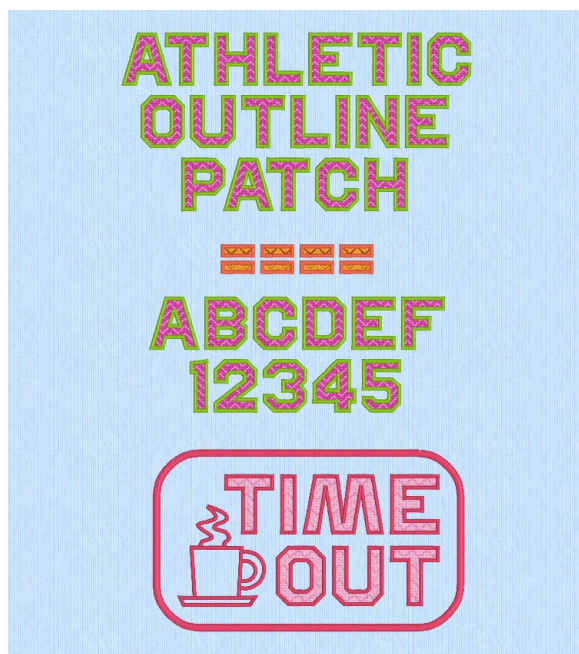
Athletic Block Patch UC 35-70mm
Satin Line
Designed for appliqué with one fabric



Athletic Outline Patch UC 35-70mm ML

Motif Line

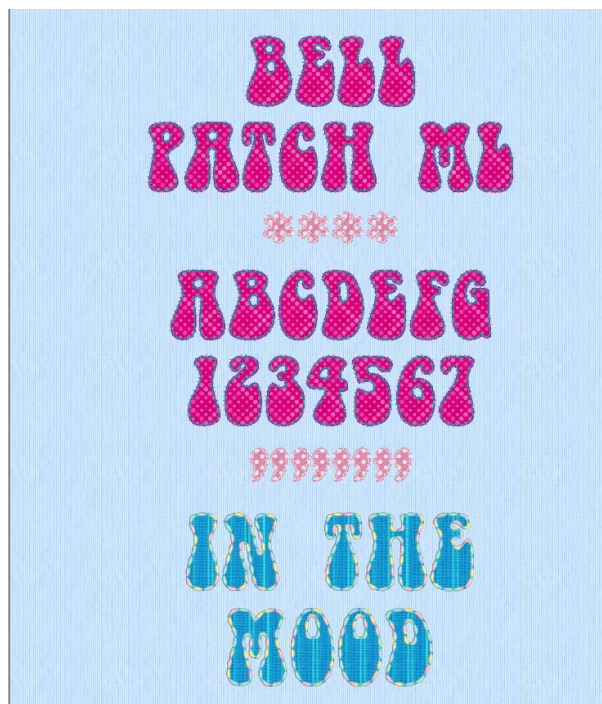
Designed for appliqué with one fabric



Athletic Outline Patch UC 35-70mm

Satin Line

Designed for appliqué with one fabric



Bell Patch UC 35-70mm ML

Motif Line

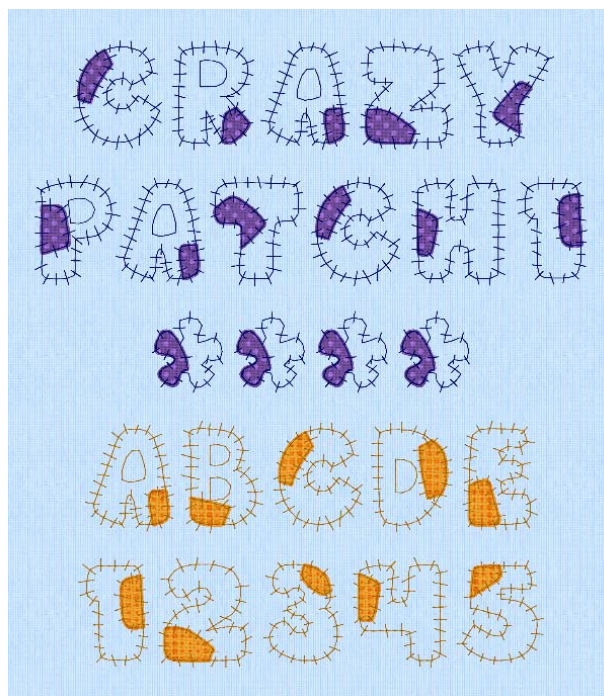
Designed for appliqué with one fabric



Chunky Patch 35-100mm

Motif Line

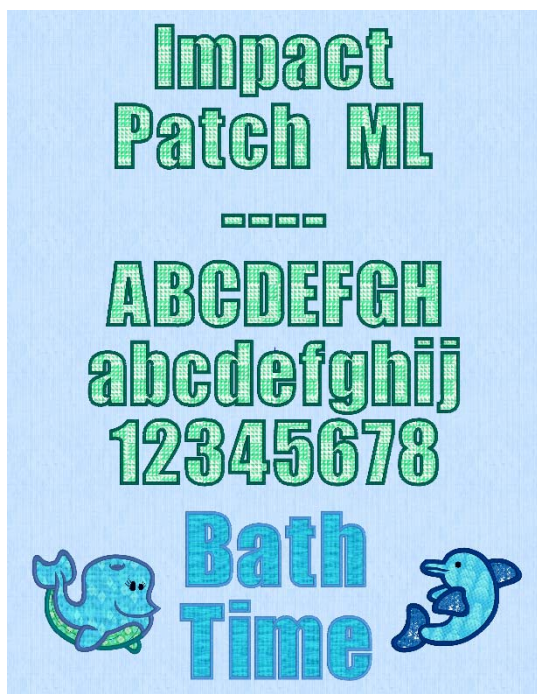
Designed for appliqué with one fabric



Crazy Patch 1 UC 55-120mm
Triple Stitch
Designed for appliqué with one fabric



Crazy Patch 2 UC 55-120mm
Triple Stitch
Designed for appliqué with two fabrics



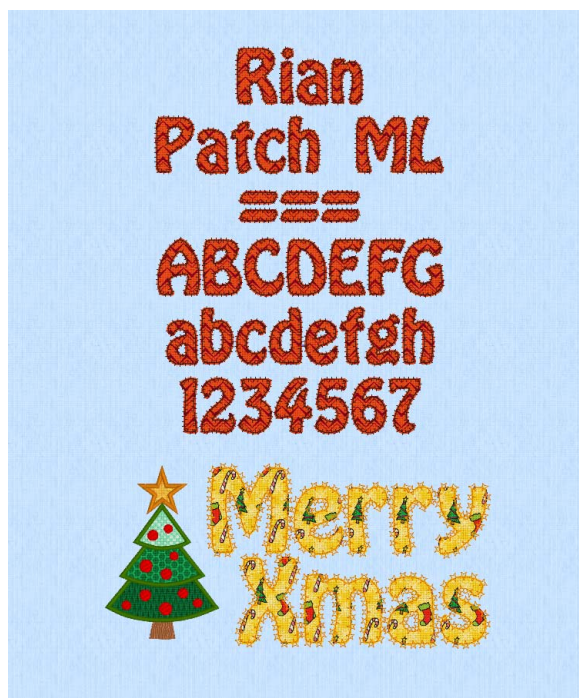
Impact Patch 60-120mm
Satin Line
Designed for appliqué with one fabric



Lombard Patch 35-70mm ML
Motif Line
Designed for appliqué with one fabric



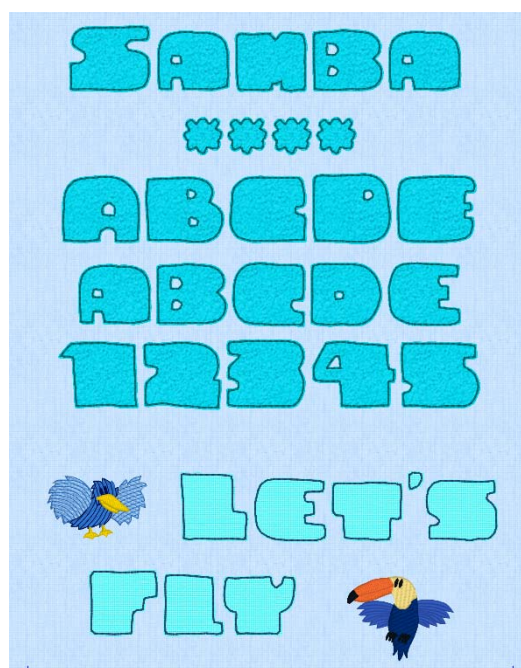
Lombard Patch 35-70mm
 Satin Line
 Designed for appliqué with one fabric



Rian Patch 35-70mm ML
 Motif Line
 Designed for appliqué with one fabric



Rian Patch 35-70mm
 Satin Line
 Designed for appliqué with one fabric

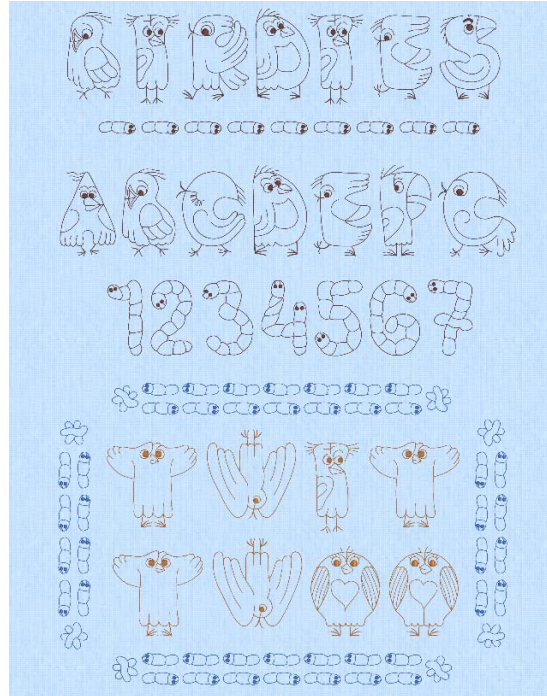


Samba 40-80mm
 Motif Line
 Designed for appliqué with one fabric

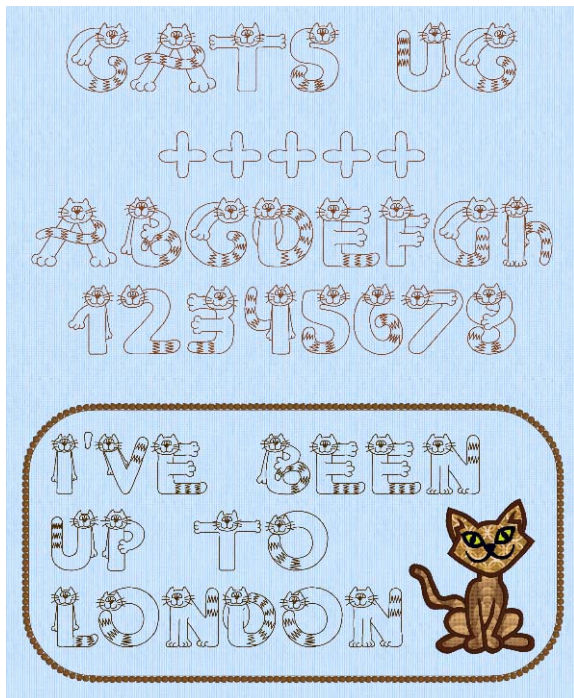
Children Category



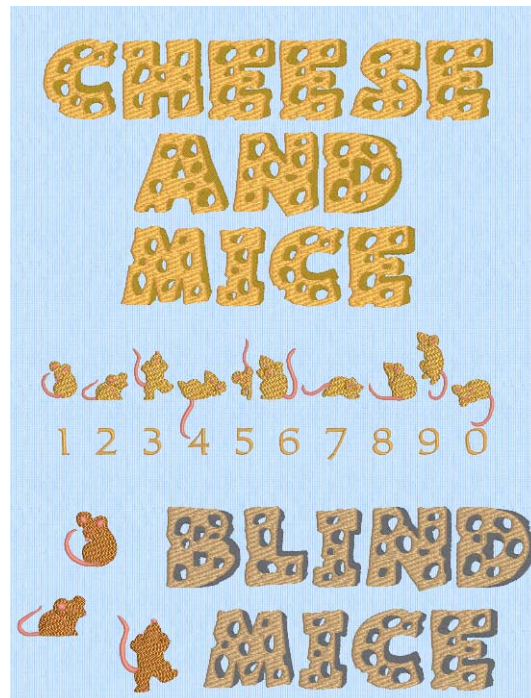
Animal Magic 45-120mm
Running Stitch, Double Stitch, Triple Stitch



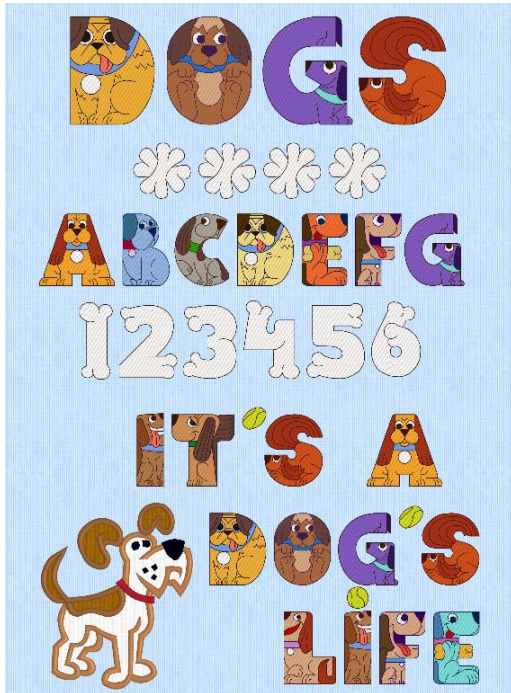
Birdies UC 70-120mm
Satin Column, Triple Stitch, Double Stitch, Running Stitch



Cats UC 35-80mm
Double Stitch, Triple Stitch

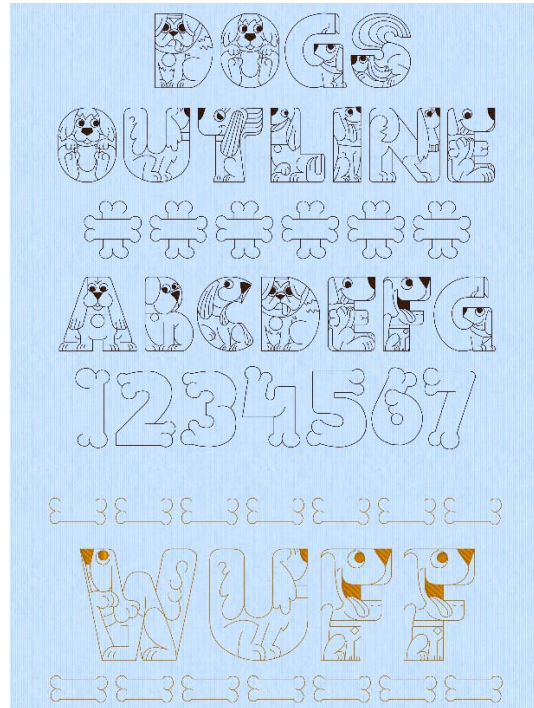


Cheese and Mice 2C UC 40-100mm
Pattern Fill



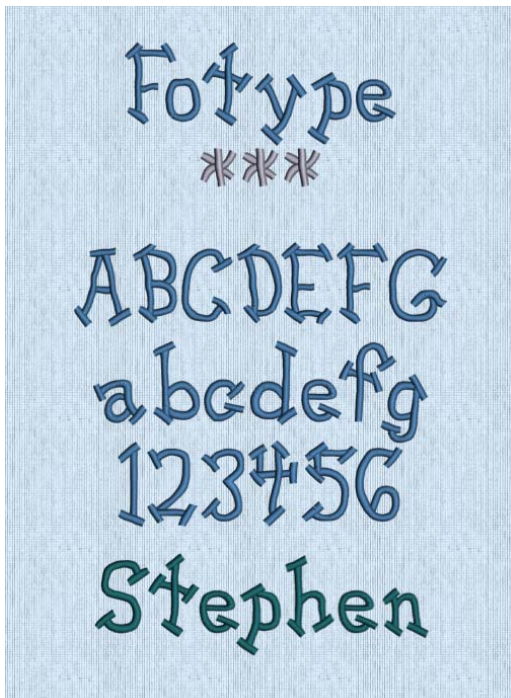
Dogs UC 60-150mm

Satin Column, Pattern Fill, Triple Stitch, Double Stitch, Running Stitch



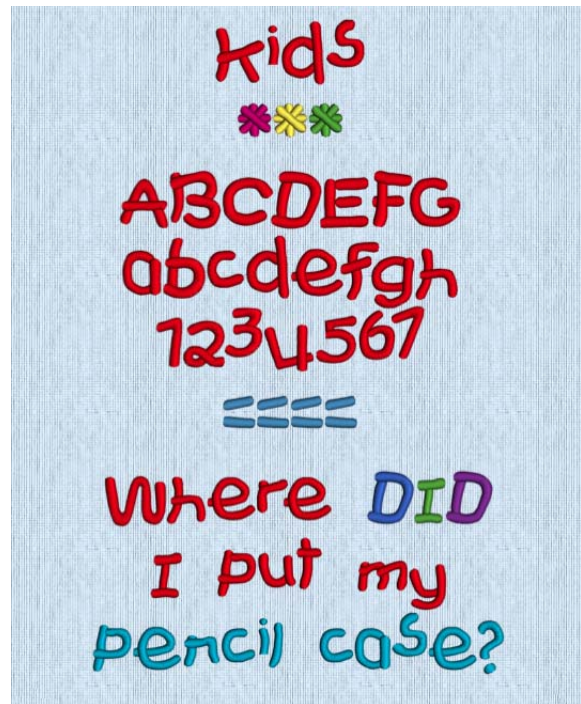
Dogs Outline UC 60-150mm

Satin Column, Pattern Fill, Triple Stitch, Double Stitch, Running Stitch



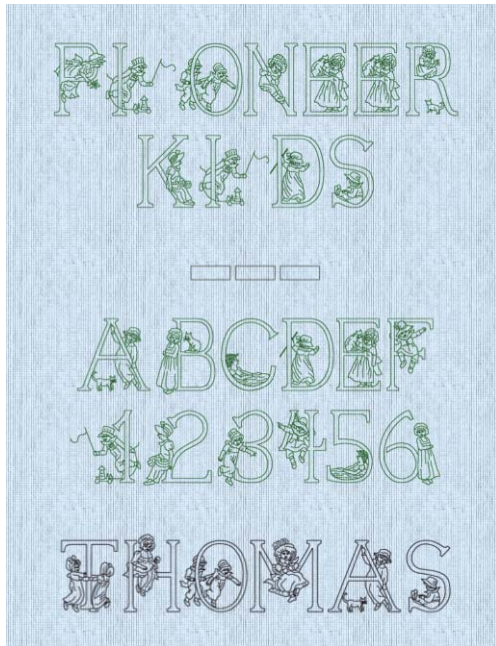
Fotype 15-45mm

Satin Column

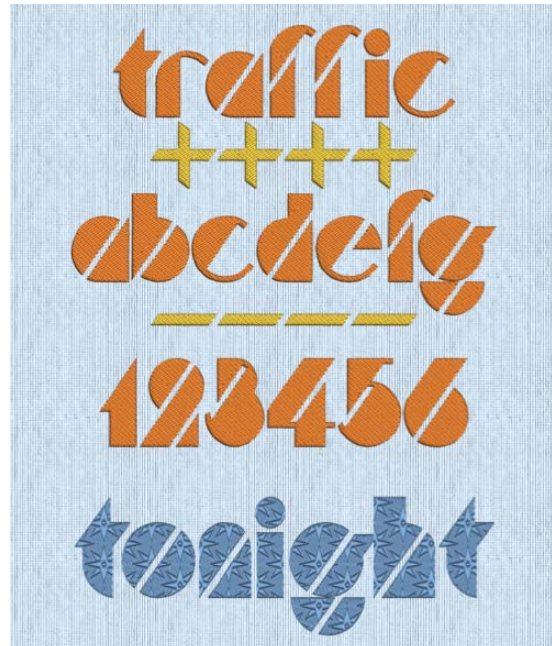


Kids 10-50mm

Satin Column



Pioneer Kids UC 50-100mm
Running Stitch, Double Stitch, Triple Stitch

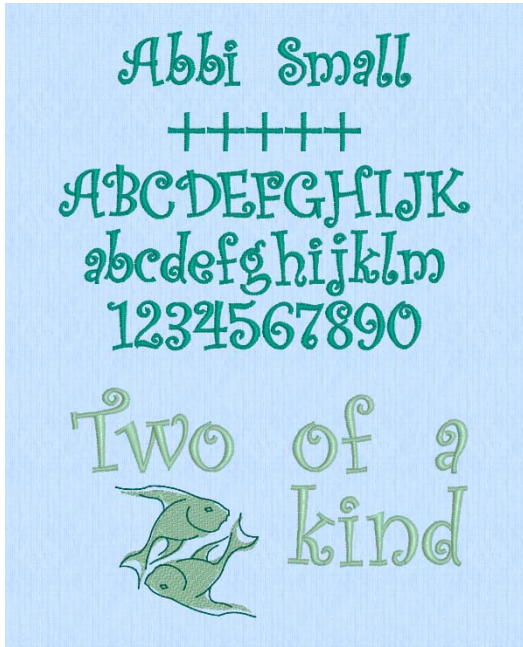


Traffic LC 15-40mm
Pattern Fill

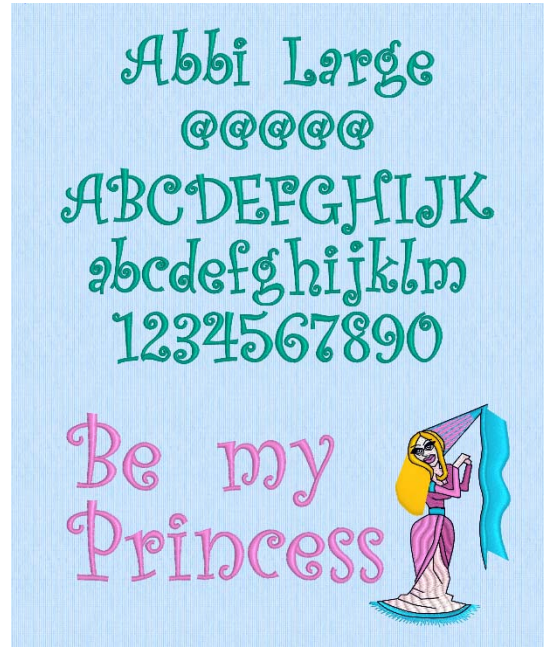


Typo 25-50mm
Satin Column

Display Category



Abbi 15-25mm
Satin Column



Abbi 25-100mm
Satin Column



Astra 2C 20-100mm
Pattern Fill, Running Stitch



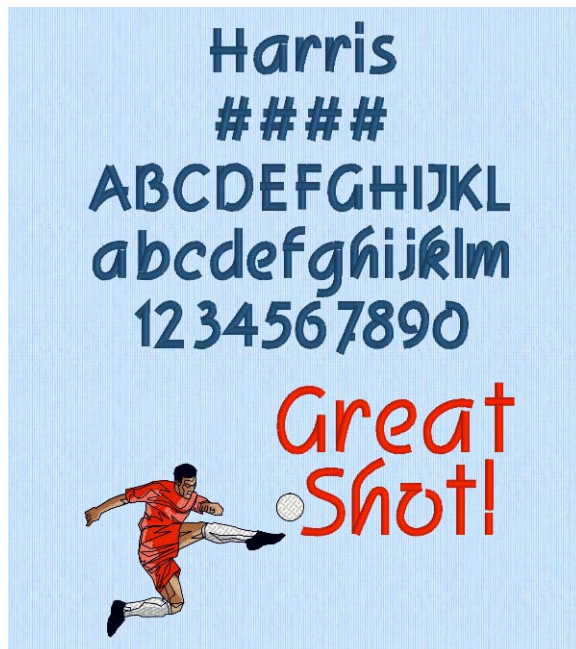
Chunky 2C 20-100mm
Pattern Fill, Triple Stitch, Double Stitch



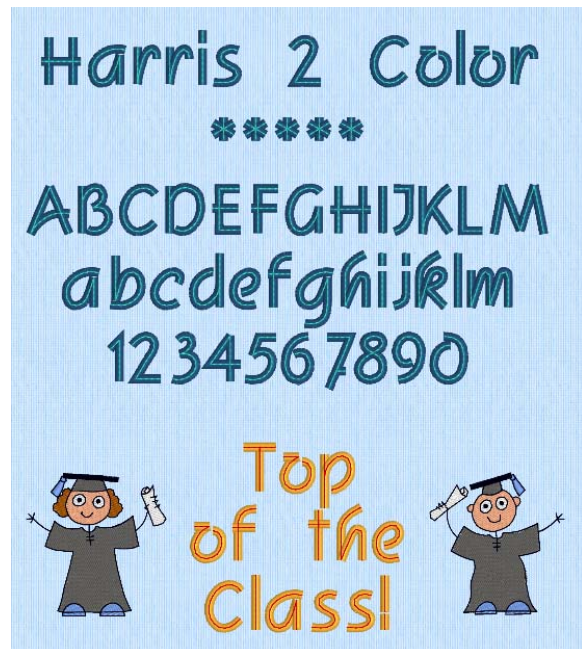
Chunky Outline 15-100mm
 Triple Stitch, Double Stitch



Deco UC 30-58mm CH
 Triple Stitch



Harris 20-80mm
 Satin Line



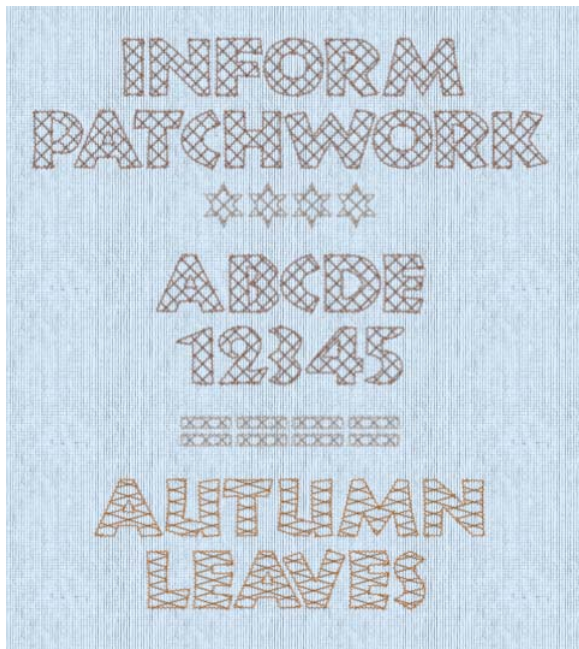
Harris 2C 20-80mm



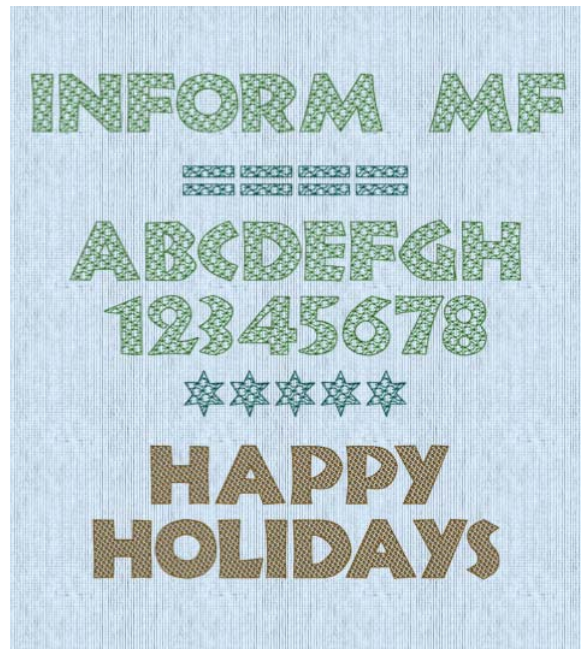
Harris Line 12-80mm
 Triple Stitch



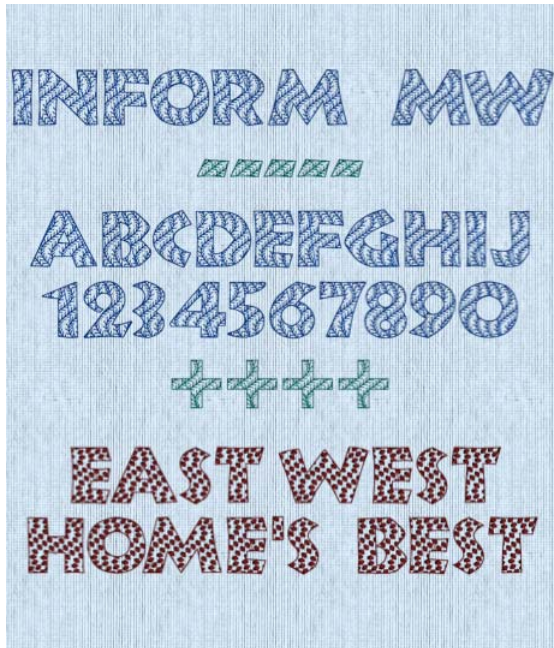
Heart Initials 2C UC 30-50mm
 Motif Fill, Triple Stitch, Satin Column



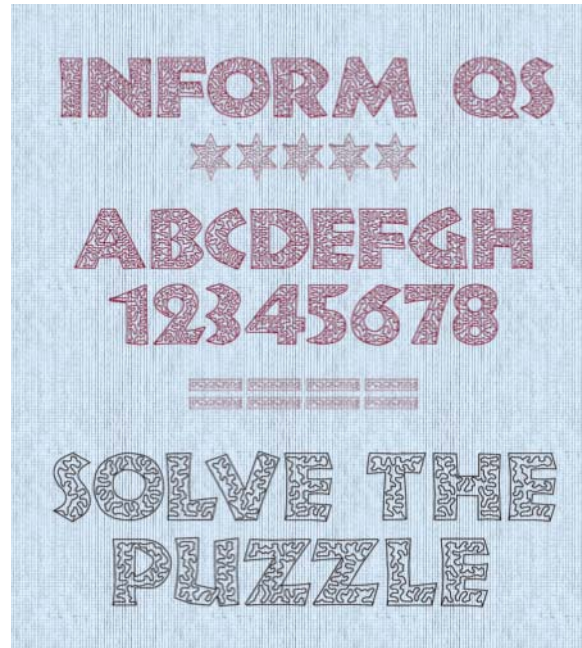
Inform Patchwork UC 50-120mm XH
 Crosshatch Fill, Double with Zigzag Return



Inform UC 25-120mm MF
 Motif Fill, Triple Stitch



Inform UC 25-120mm MW
MultiWave Fill, Triple Stitch



Inform UC 25-120mm QS
QuiltStipple Fill, Triple Stitch



Linea UC 40-100mm
Satin Column



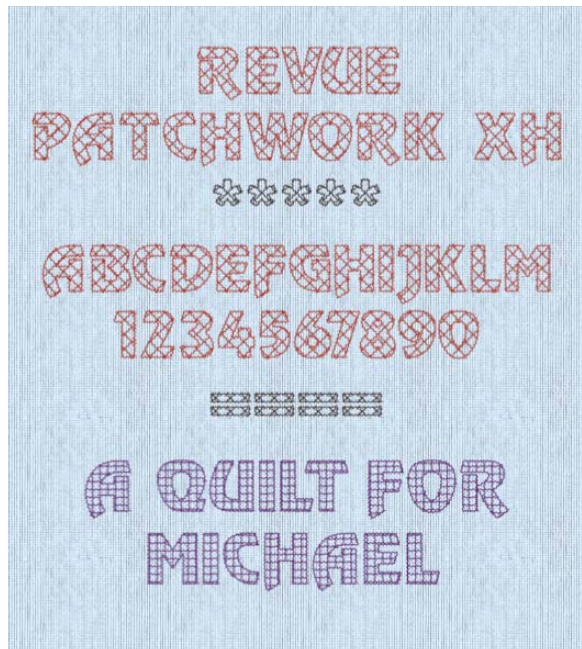
Mirage UC 65-100mm
Satin Column



Revue 2C UC 25-120mm MF
Motif Fill, Satin Line



Revue 2C UC 25-120mm SF
Spiral Fill, Satin Line



Revue Patchwork UC 50-120mm XH
Crosshatch Fill, Double with Zigzag Return



Revue UC 25-120mm MW
MultiWave Fill, Triple Stitch



Stencil UC 15-100mm
Pattern Fill



Swirl 25-55mm
Satin Column

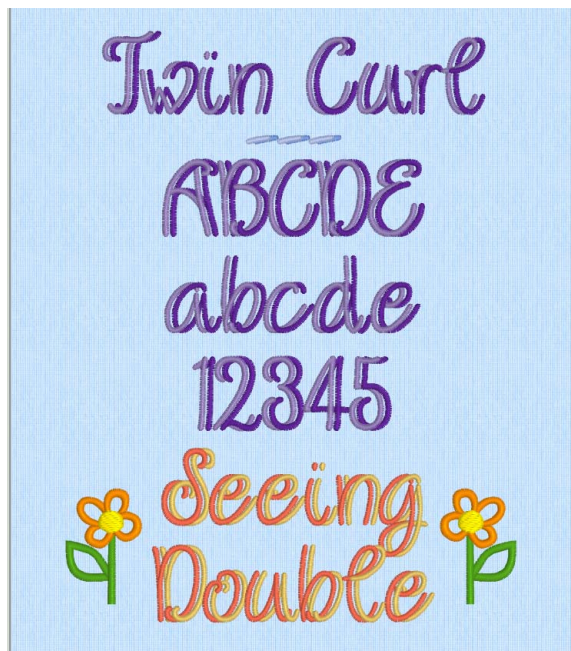
Effects Category



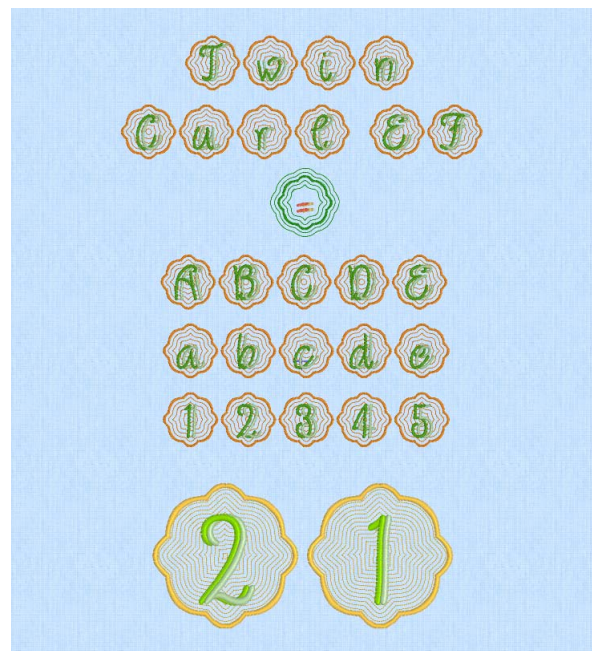
Felting Line 20-50mm
 Double Stitch, Triple Stitch



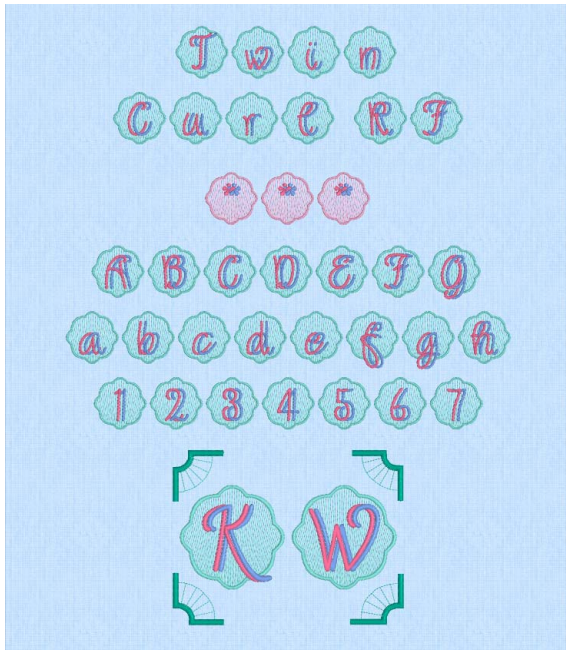
Felting Loops 20-70mm
 Triple Stitch



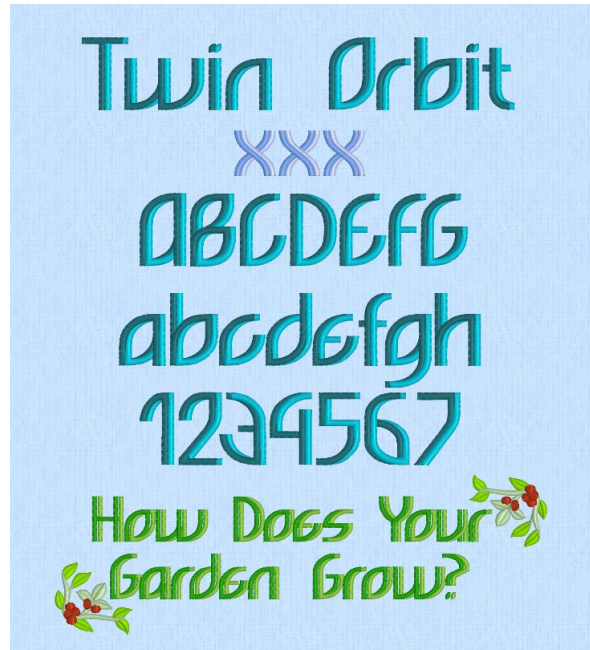
Twin Curl 2C 30-60mm
 Satin Column



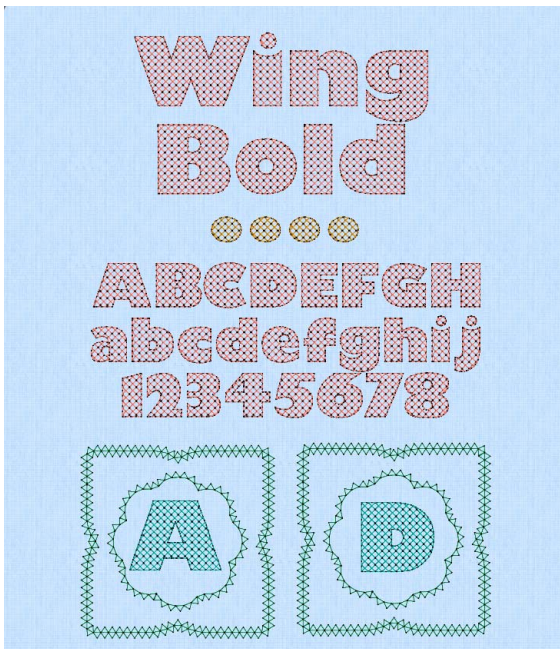
Twin Curl 3C 40-80mm EF
 Satin Column, Echo Fill



Twin Curl 3C 40-80mm RF
Satin Column, Radial Fill



Twin Orbit 2C 20-60m*
Satin Column



Wing Bold 25-70mm
Motif Fill, Triple Stitch



Wing Deco UC 30-80mm
Motif Fill, Triple Stitch

Elegant Category



American Gothic 25-75mm
Satin Column



Anglo Saxon 20-80mm
Satin Column



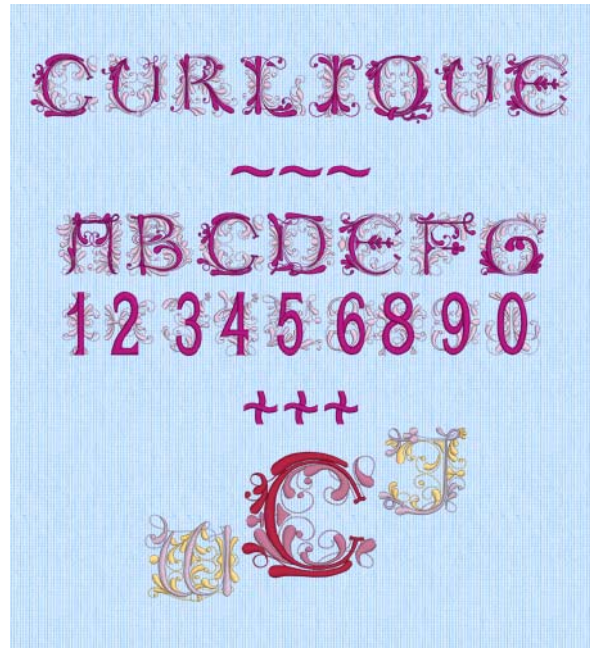
Charteris UC 35-65mm
Pattern Fill, Satin Column



Corinthian 15-35mm
Satin Column



Curlew 15-50mm
Satin Column



Curlique 2C UC 40-80mm
Satin Column



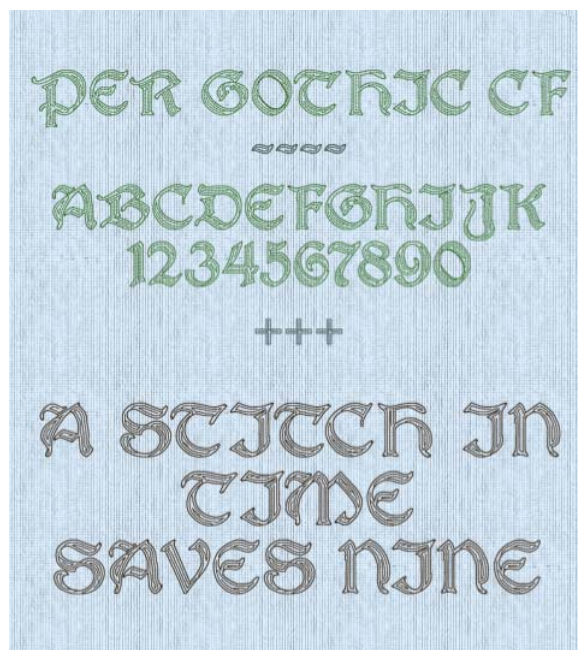
Old English 14-50mm
Satin Column



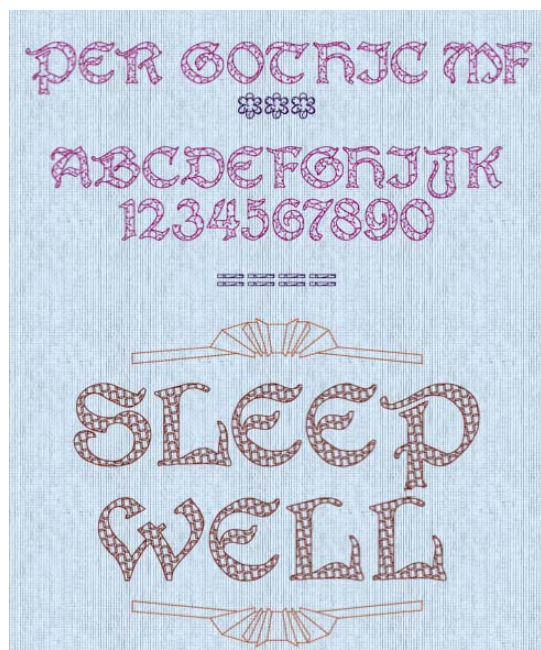
Ornamental 3C UC 40-80mm
Satin Column



Per Gothic 20-50mm
Pattern Fill



Per Gothic UC 25-120mm CF
Contour Fill, Triple Stitch



Per Gothic UC 25-120mm MF
Motif Fill, Triple Stitch



Ribbon 2C UC 18-65mm
Satin Column

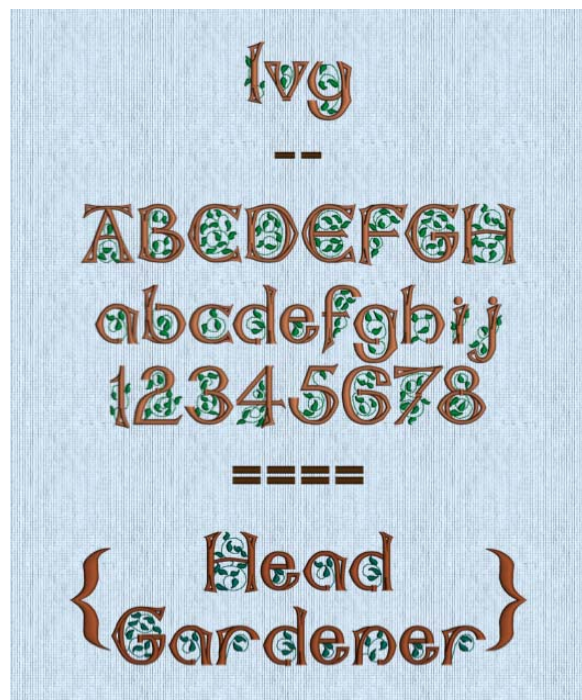
Floral Category



Acorn 6C UC 35-60mm
Non-editable



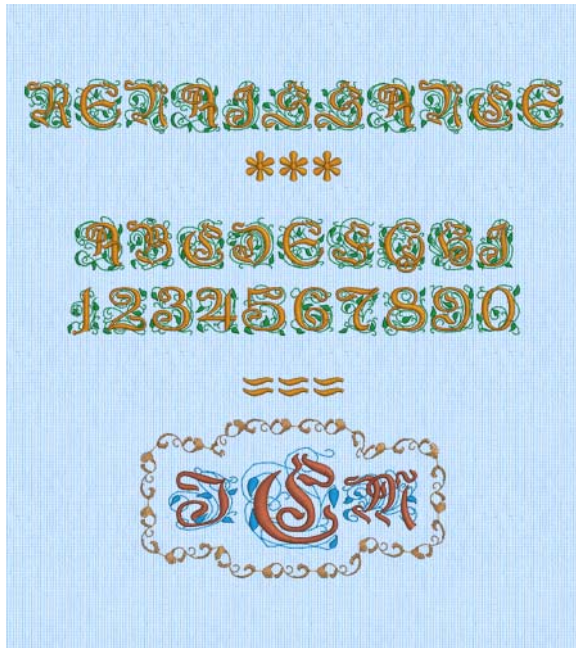
Daisy 2C UC 25-65mm
Satin Column



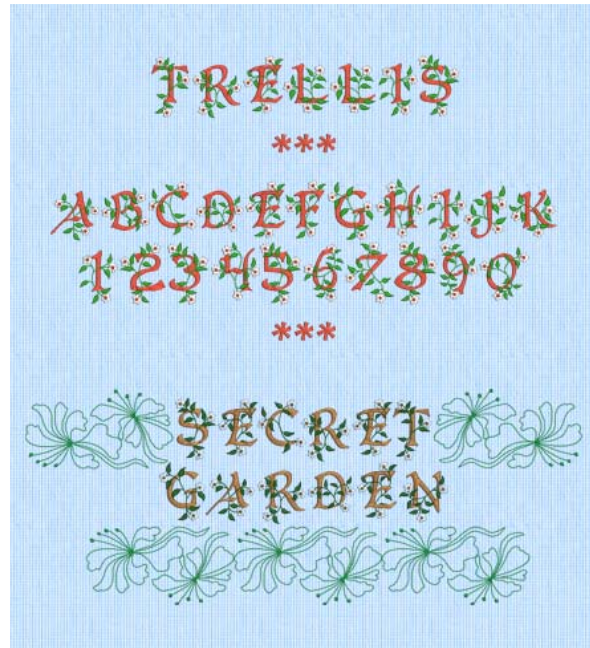
Ivy 2C 15-60mm
Satin Column



Primrose 2C UC 25-65mm
Satin Column



Renaissance 2C UC 25-80mm
Satin Column

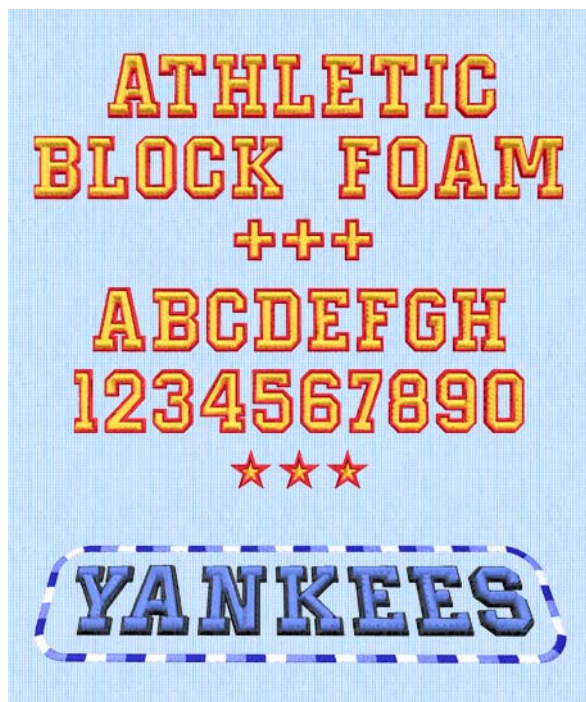


Trellis 3C UC 30-75mm
Pattern Fill, Satin Column

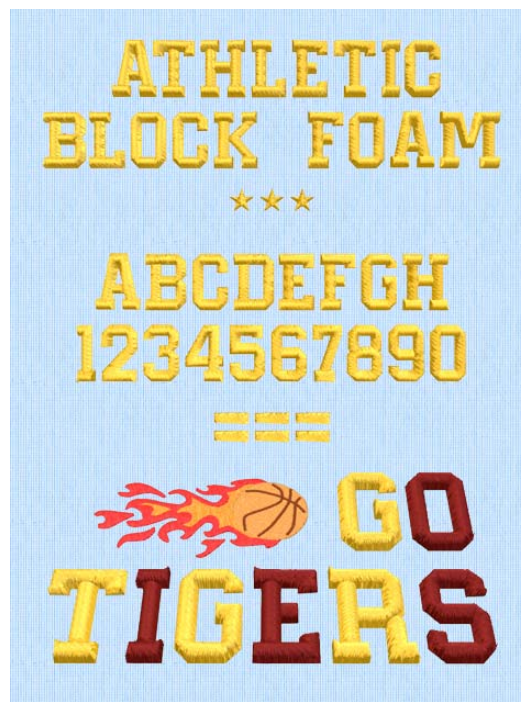


Vine 2C UC 25-40mm
Satin Column

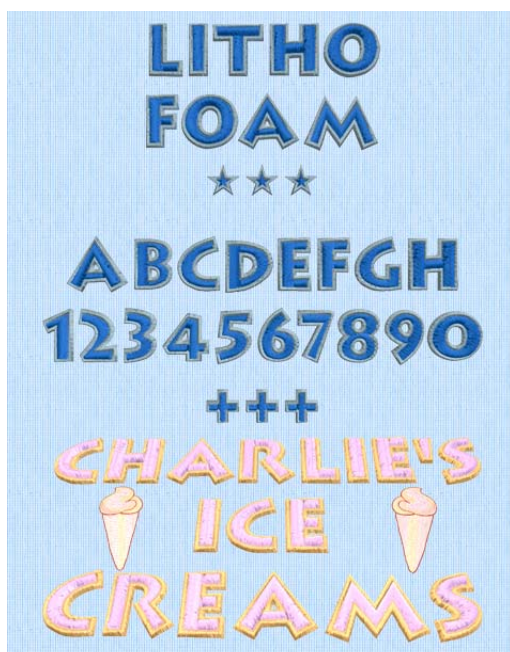
Foam Category



Athletic Block Foam 2C UC 40-50mm
Non-editable



Athletic Block Foam UC 40-50mm
Non-editable



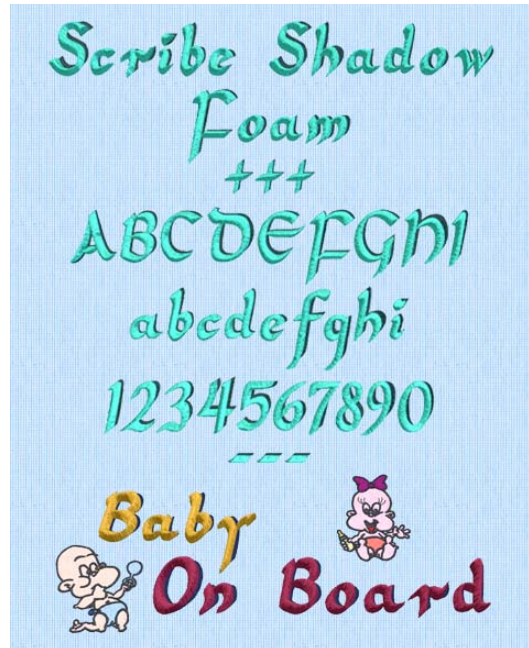
Litho Foam 2C UC 30-50mm
Non-editable



Litho Foam UC 30-50mm
Non-editable



Scribe Foam 30-50mm
Non-editable

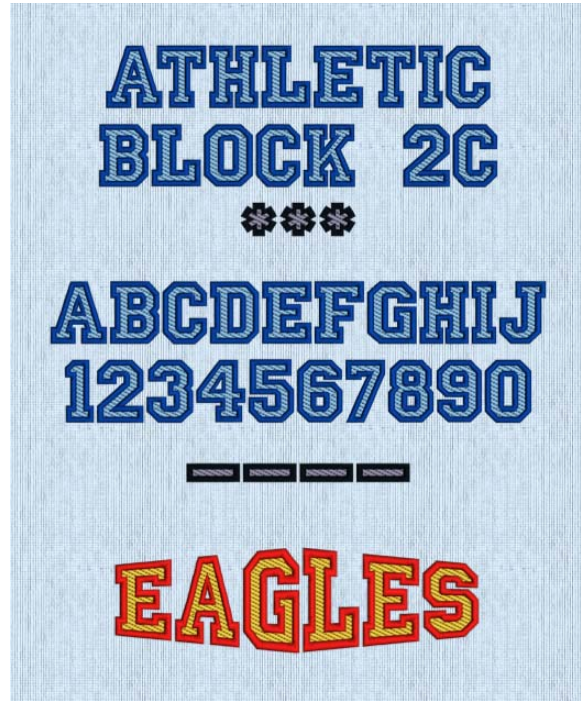


Scribe Shadow Foam 2C 30-50mm
Non-editable

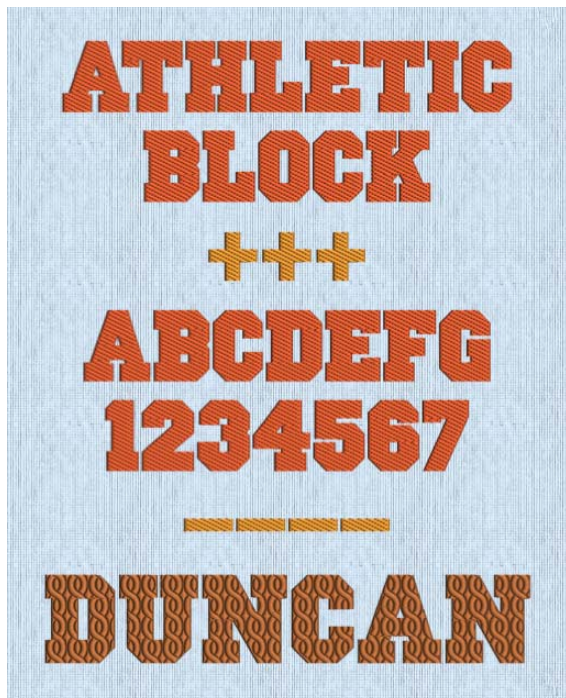
Fun Category



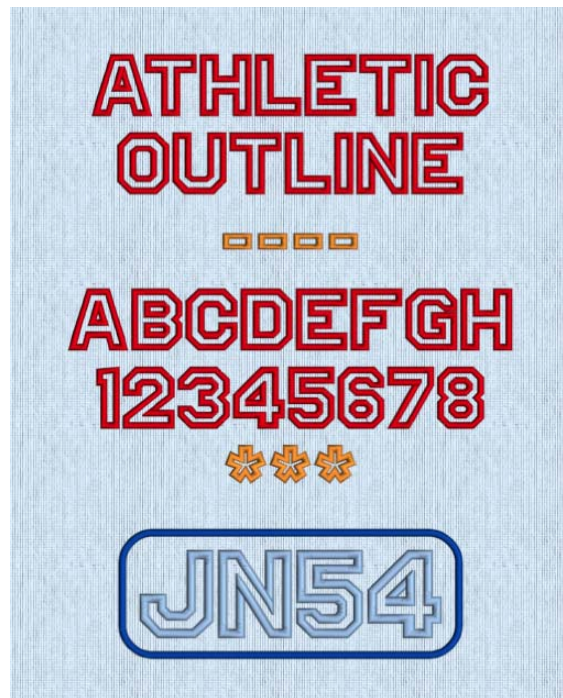
Archery 30-50mm
Satin Column, Running Stitch, Double Stitch, Triple Stitch



Athletic Block 2C UC 30-80mm
Pattern Fill, Satin Line



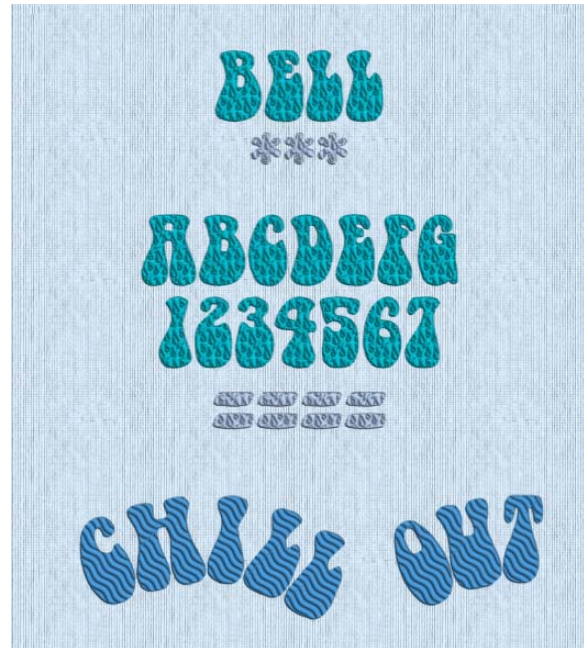
Athletic Block UC 15-100mm
Pattern Fill



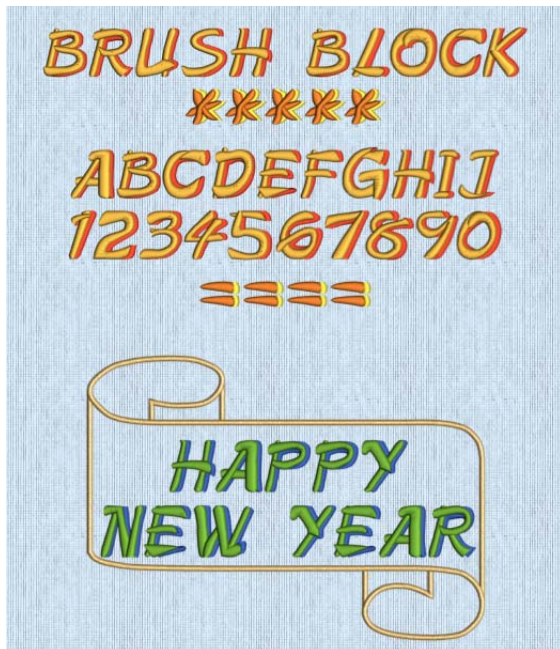
Athletic Outline UC 20-50mm
Satin Column



Balloon 3C UC 25-80mm
Non-editable



Bell UC 20-100mm
Pattern Fill



Brush Block 2C UC 20-30mm
Satin Column



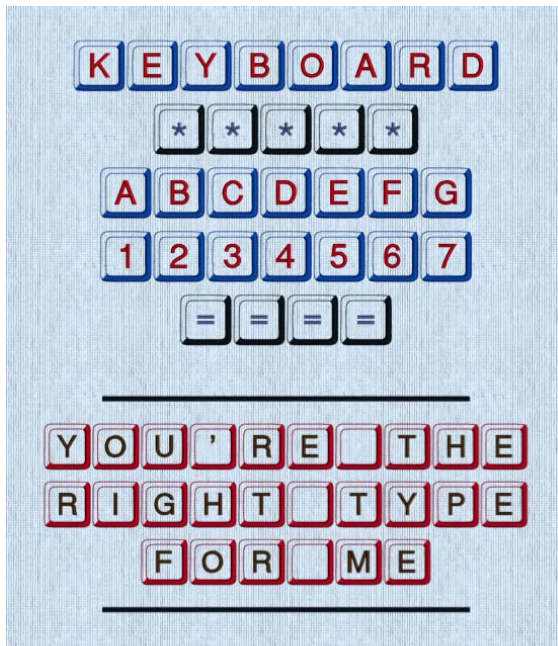
Challenge 15-25mm
Satin Column



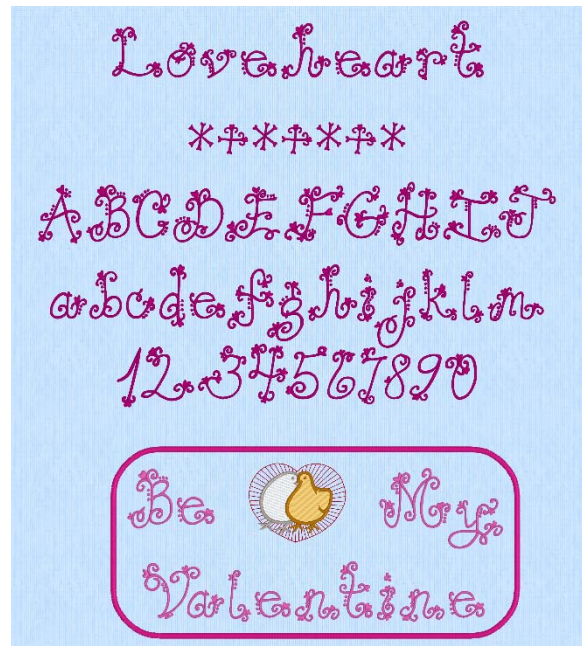
Christmas 50-100mm
Satin Column, Pattern Fill, Satin Line, Running Stitch



Hand Crafted 20-75mm
Satin Column, Running Stitch



Keyboard 2C UC 30-80mm
Satin Column, Running Stitch, Double Stitch



Loveheart 45-100mm
Satin Column, Running Stitch



Whimsy 25-100mm
Triple Stitch, Double Stitch

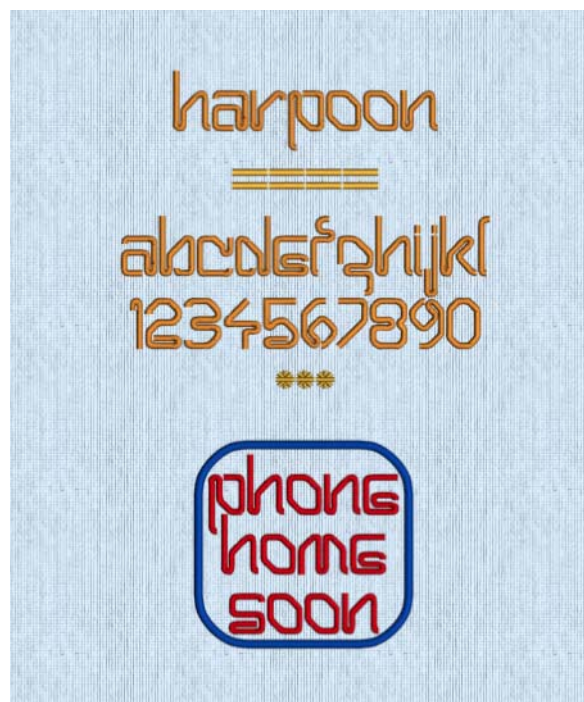
Future Category



Atom UC 20-40mm
Satin Column



Blocked 08-35mm
Satin Column, Running Stitch



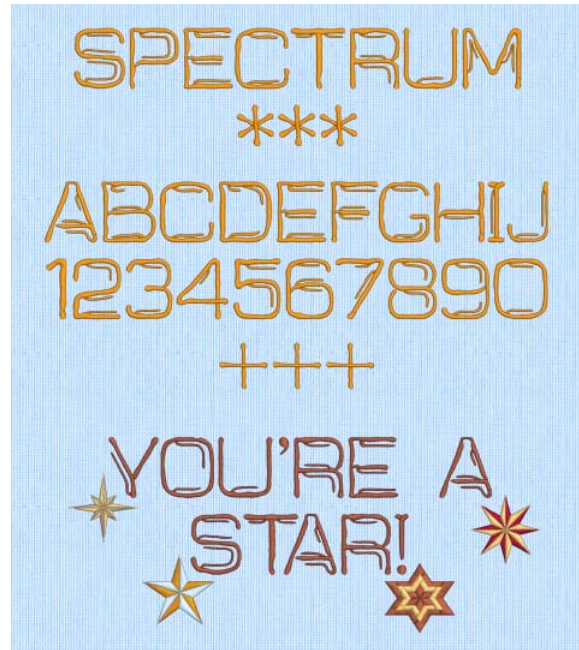
Harpoon LC 10-20mm
Satin Column



LCD UC 20-75mm
Satin Line, Running Stitch



Skott UC 8-40mm
Satin Column

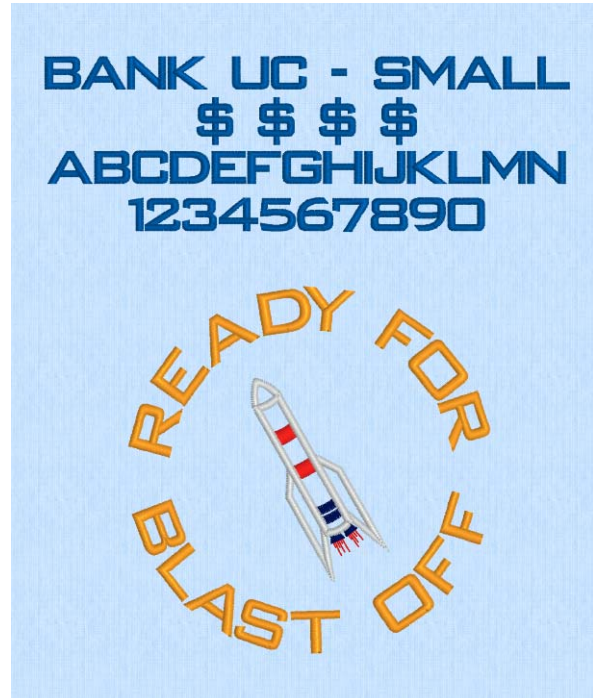


Spectrum UC 35-75mm
Satin Column

Modern Category



Arcadia 10-40mm
Satin Column, Running Stitch



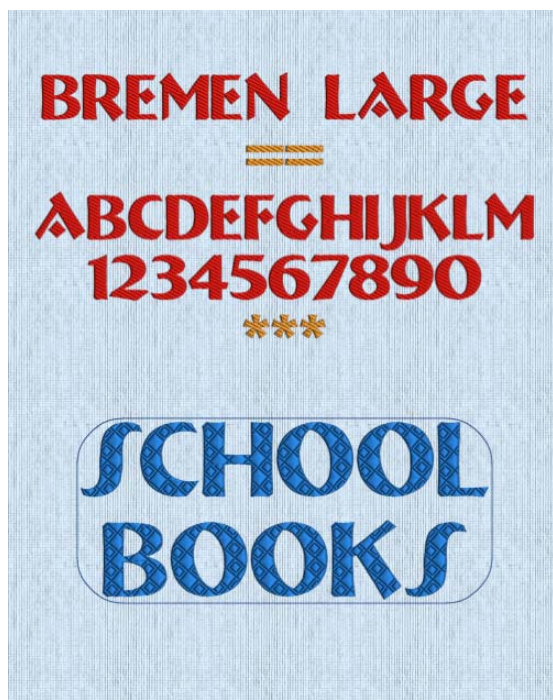
Bank UC 10-20mm
Satin Column, Running Stitch



Bank UC 20-60mm
Satin Column, Running Stitch



Bremen UC 10-25mm
Satin Column



Bremen UC 15-60mm
Pattern Fill



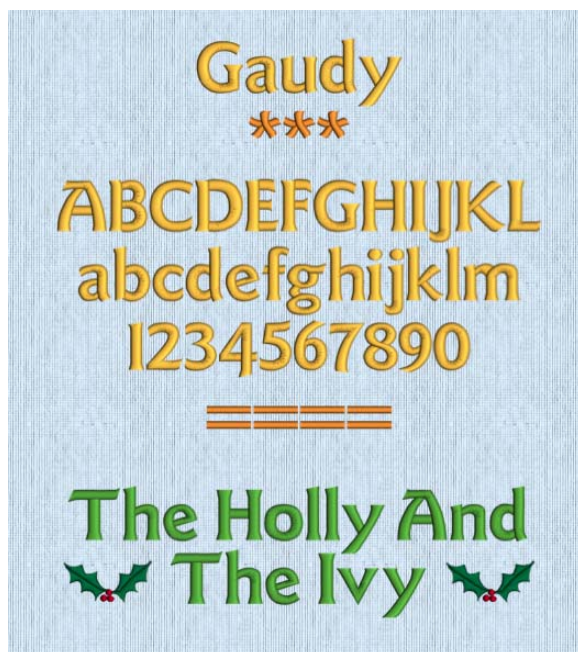
Carlton UC 15-45mm
Satin Column



Electra 8-25mm
Satin Column



Ellipse 20-60mm
Satin Column



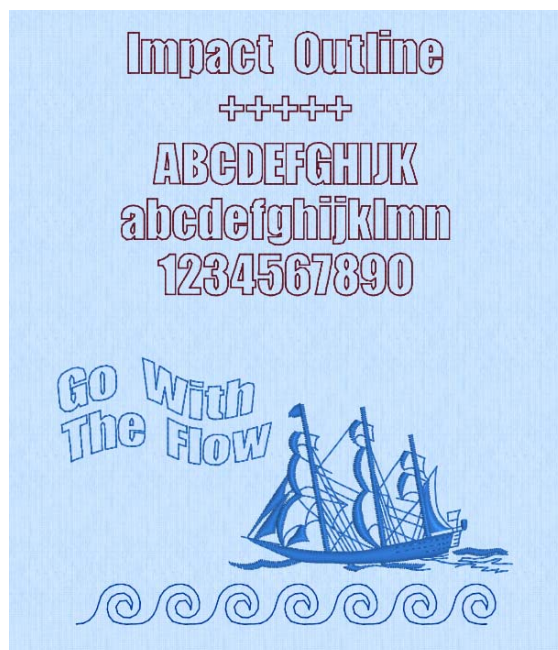
Gaudy 12-30mm
Satin Column



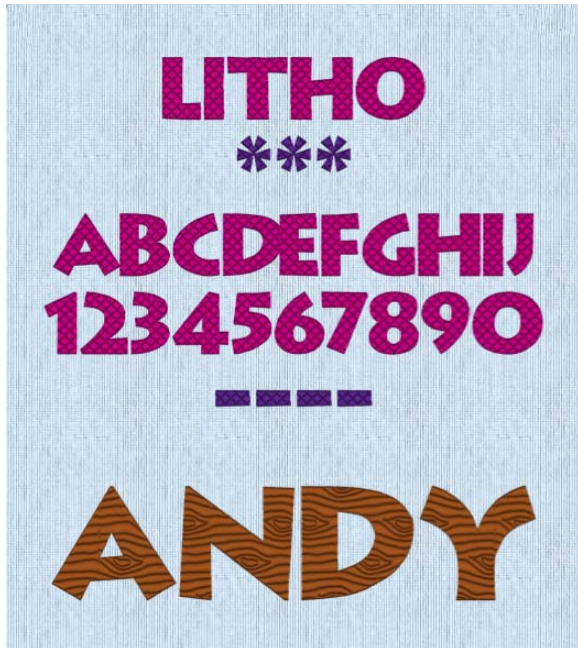
Impact 10-20mm
Satin Column, Running Stitch



Impact 20-60mm
Satin Column, Running Stitch



Impact Outline 12-60mm
Triple Stitch



Litho UC 20-80mm
Pattern Fill



Lombard 7-30mm
Satin Column



Nadianne 15-25mm
Satin Column



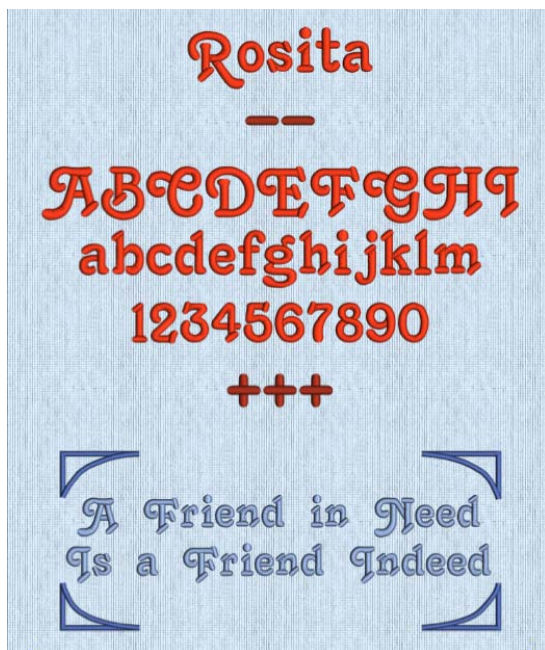
Placid 10-45mm
Satin Column



Revue 15-35mm
Satin Column



Rian 10-30mm
Satin Column



Rosita 12-32mm
Satin Column

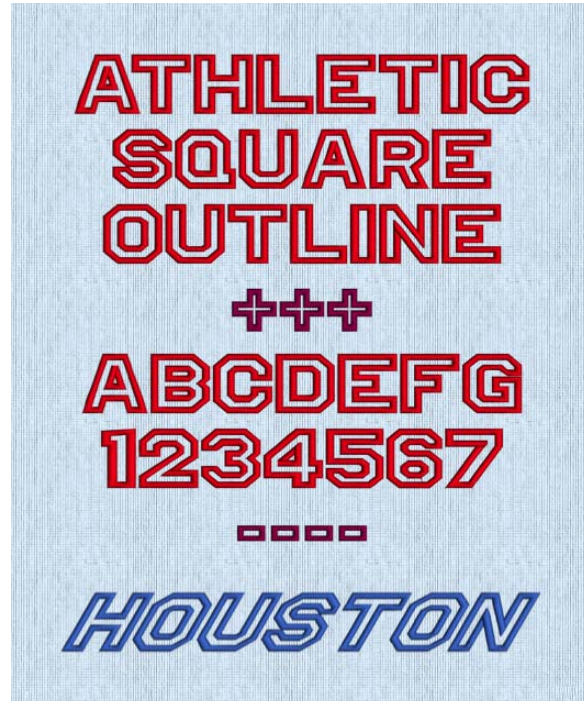


Sans UC 20-50mm
Satin Line, Running Stitch

Monogram Category



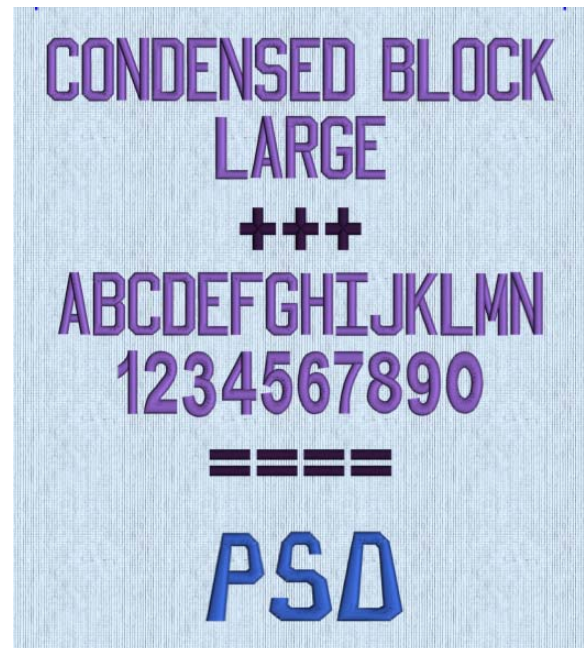
Athletic Square 2C UC 30-80mm
Pattern Fill, Satin Column



Athletic Square Outline UC 15-50mm
Satin Column



Condensed Block UC 15-25mm
Satin Column



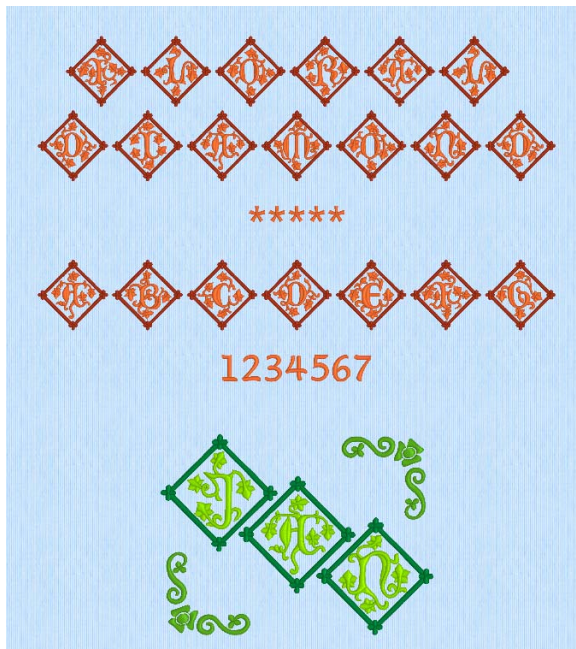
Condensed Block UC 25-50mm
Satin Column



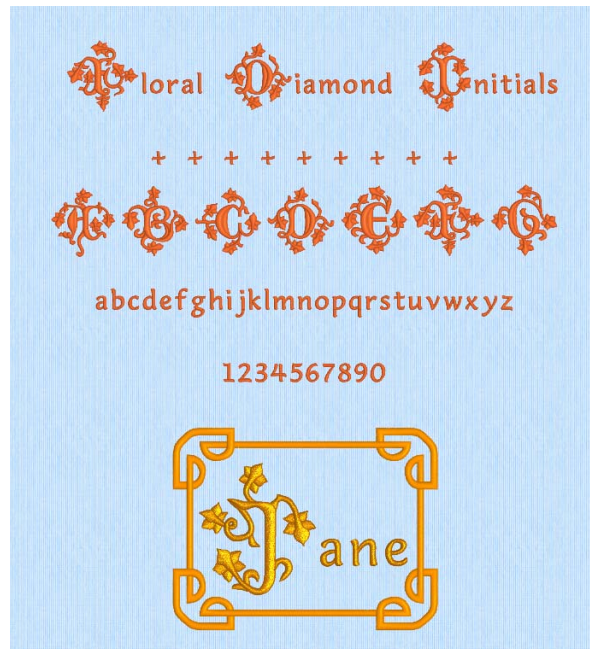
Curly UC 15-30mm
Satin Column



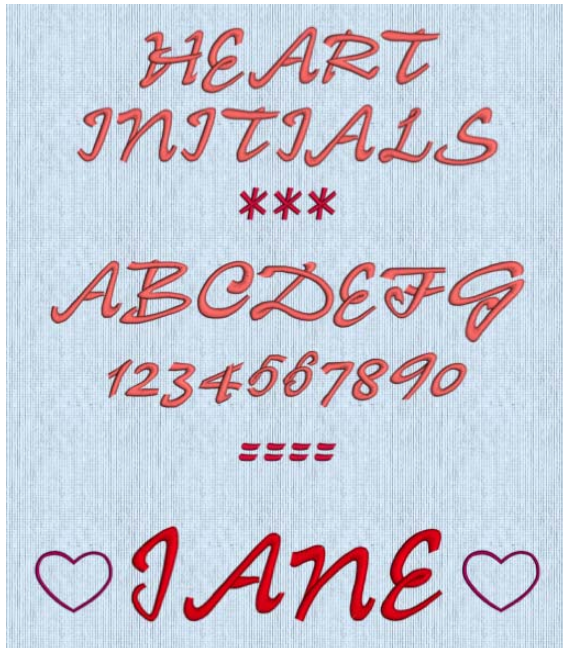
Curly UC 25-50mm
Satin Column



Floral Diamond 2C UC 60-100mm
Satin Column, Running Stitch



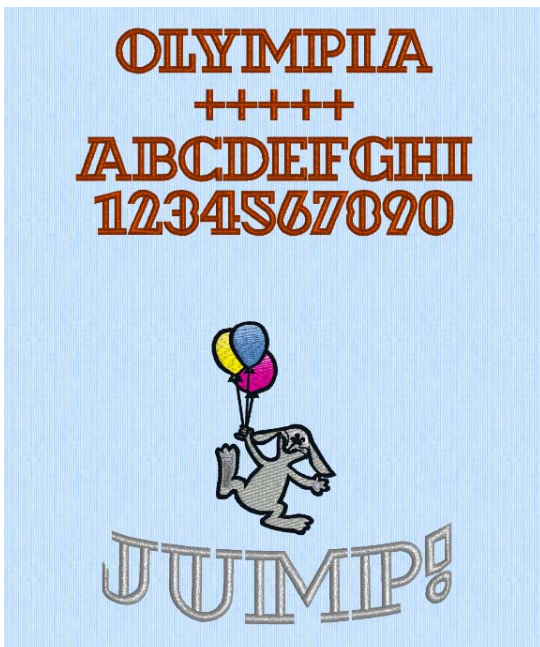
Floral Diamond Initials 40-80mm
Satin Column, Running Stitch



Heart Initials UC 30-50mm
Satin Column



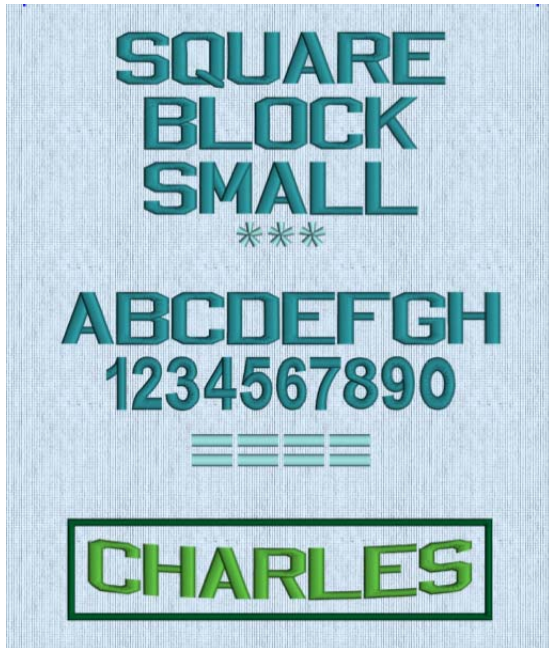
Olympia 2C UC 30-50mm*
Satin Column, Pattern Fill, Running Stitch



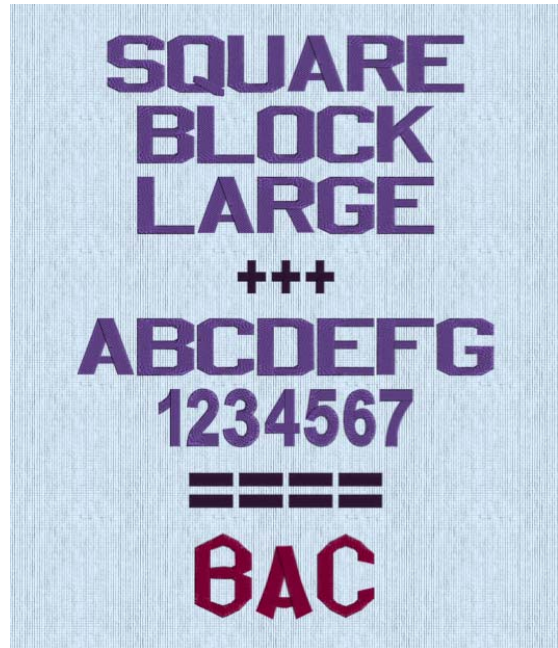
Olympia UC 15-30mm*
Satin Column, Running Stitch



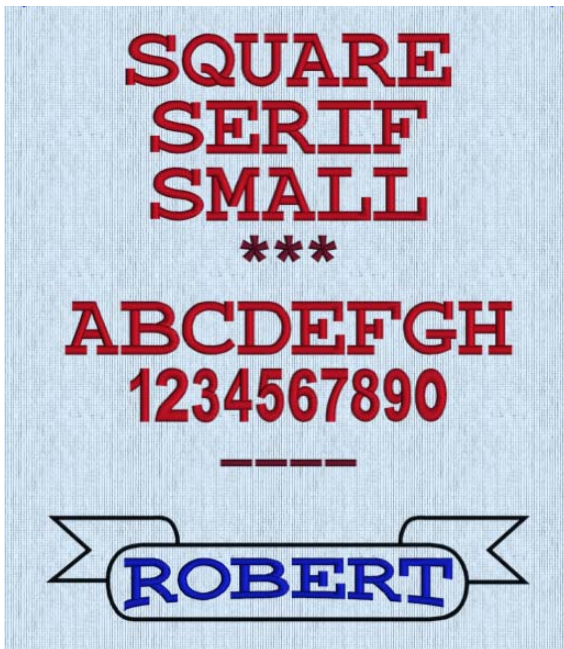
Rollo UC 35-100mm*
Satin Column



Square Block UC 15-30mm
Satin Column



Square Block UC 30-50mm
Satin Column



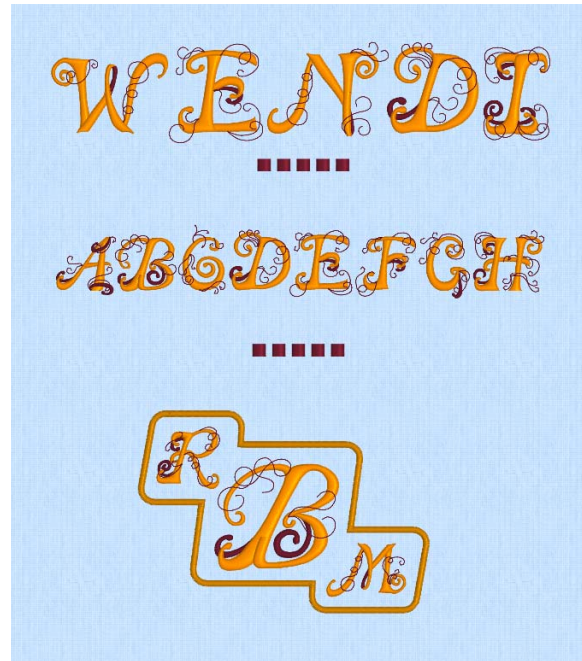
Square Serif UC 10-30mm
Satin Column



Square Serif UC 20-65mm
Satin Column



Tempus UC 35-60mm
Satin Column, Running Stitch



Wendi 2C UC 25-60mm
Satin Column, Running Stitch, Double Stitch

Monogram Fonts

Fonts in the Monogram Category use mainly even width Characters. They are recommended for use with classic type monograms.

National Category



Bamboo UC 10-35mm
Satin Column



Celtic UC 6-35mm
Satin Column



Gaelic 2C UC 25-40mm
Satin Column



Greek 10-40mm
Satin Column



Mandala UC 15-30mm
Satin Column

Α	Β	Γ	Δ	Ε	Θ	Η	Ι
A	B	C	D	E	F	H	I
Χ	Κ	Λ	Μ	Ν	Ο	Π	Ω
J	K	L	M	N	O	P	Q
Ρ	Σ	Τ	Υ	Ψ	Ξ	Φ	
R	S	T	U	V	W	X	Y
Ζ	α	β	γ	δ	ε	θ	η
Z	a	b	c	d	e	f	h
ι	χ	κ	λ	μ	ν	ο	π
i	j	k	l	m	n	o	p
ω	ρ	σ	τ	υ	ς	ψ	ξ
q	r	s	t	u	v	w	x
φ	ξ						
y	z						

Greek

On your keyboard, use the character below the Greek character to write that character. Numbers, symbols and punctuation use their usual keys.



Mandala UC 30-60mm
Satin Column



Hebrew 10-40mm
Satin Column



Mandarin UC 15-35mm
Satin Column



Hebrew

On your keyboard, use the character below the Hebrew character to write that character. Numbers, symbols and punctuation use their usual keys.



Origami 2C 25-80mm
Satin Column, Running Stitch



Thor UC 10-30mm
Satin Column



Wabisabi 20-40mm
Satin Column, Running Stitch

Nearest Point Category



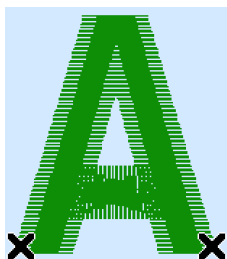
Antonia NP 05-10mm
Satin Column



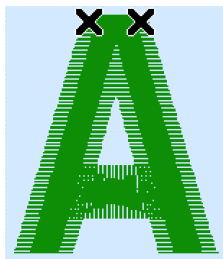
Arcadia NP 10-40mm
Satin Column

Nearest Point

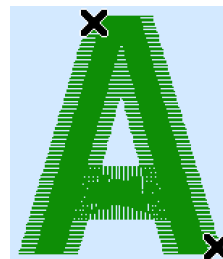
Nearest point fonts use special logic to determine the best way to join characters together. There are four versions of each character to enable the special joining method. Nearest Point fonts are ideally used with Running Stitch connection, to avoid the need for trimming with small characters. Each character has four versions to give different start (on the left) and end (on the right) points as shown below. The correct character versions are automatically selected to give the shortest joining distances between each character.



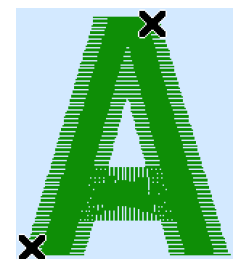
Bottom Left to
Bottom Right



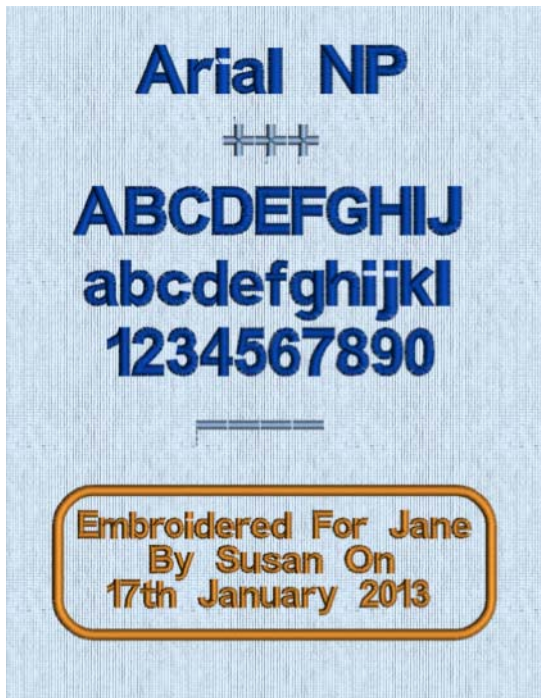
Top Left to
Top Right



Top Left to
Bottom Right



Bottom Left to
Top Right

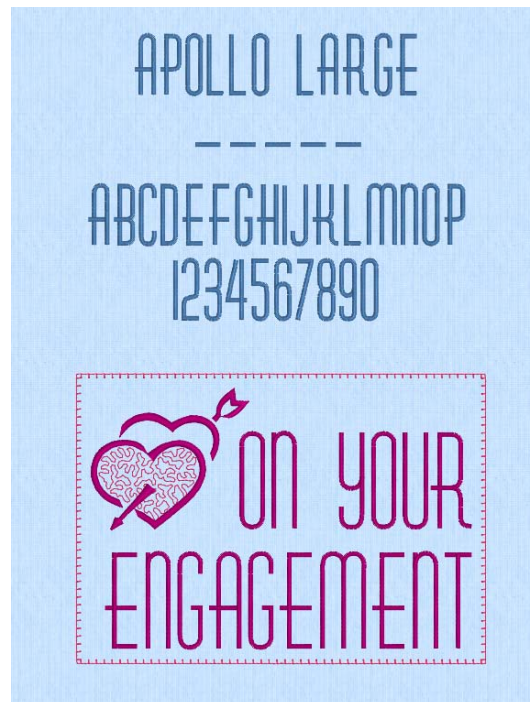


Arial NP 08-14mm
Satin Column

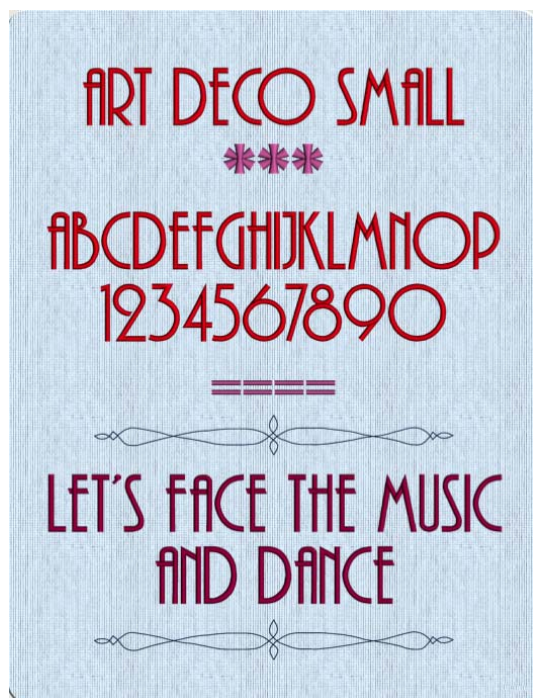
Retro Category



Apollo UC 15-30mm
Triple Stitch, Running Stitch



Apollo UC 25-80mm
Satin Line, Running Stitch



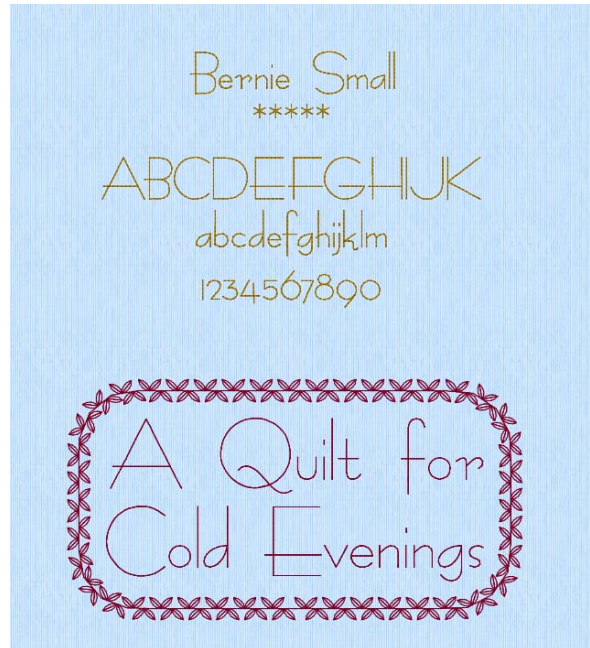
Art Deco UC 15-50mm
Satin Column



Art Deco UC 50-100mm
Satin Column



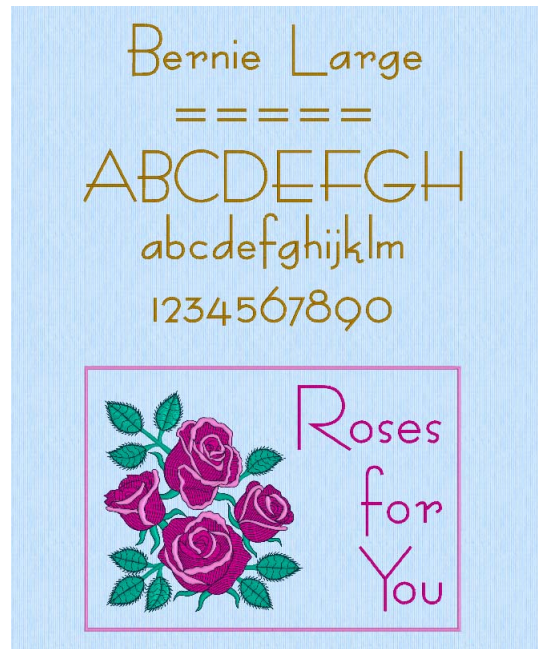
Art Nouveau 12-20mm
 Satin Column



Bernie 15-25mm
 Triple Stitch, Running Stitch



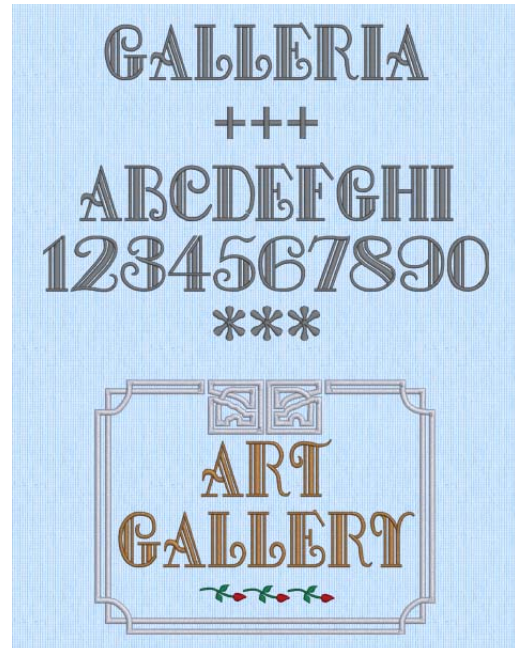
Bernie 25-40mm
 Satin Line



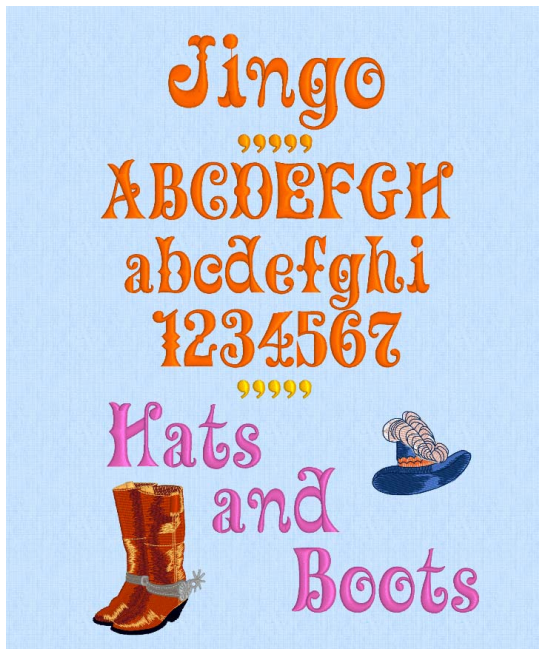
Bernie 40-100mm
 Satin Line



Chance 10-40mm
Satin Column



Galleria UC 16-60mm
Satin Column



Jingo 25-55mm
Satin Column



Legal 6-40mm
Satin Column



Metro UC 12-25mm
Satin Column



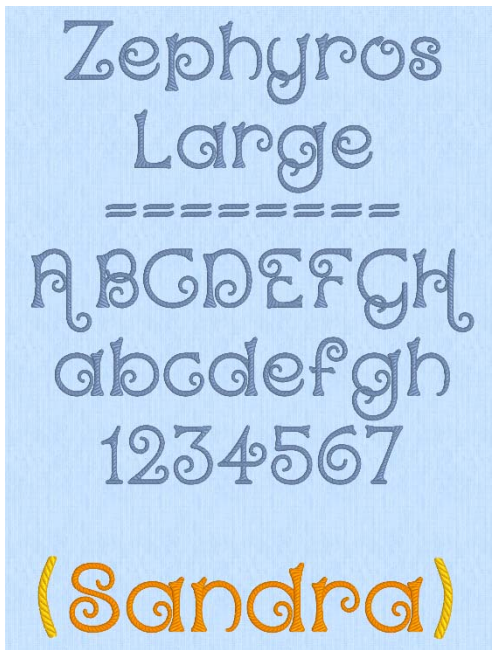
Miami 12-40mm
Satin Column



SanFran 15-60mm
Satin Column, Pattern Fill

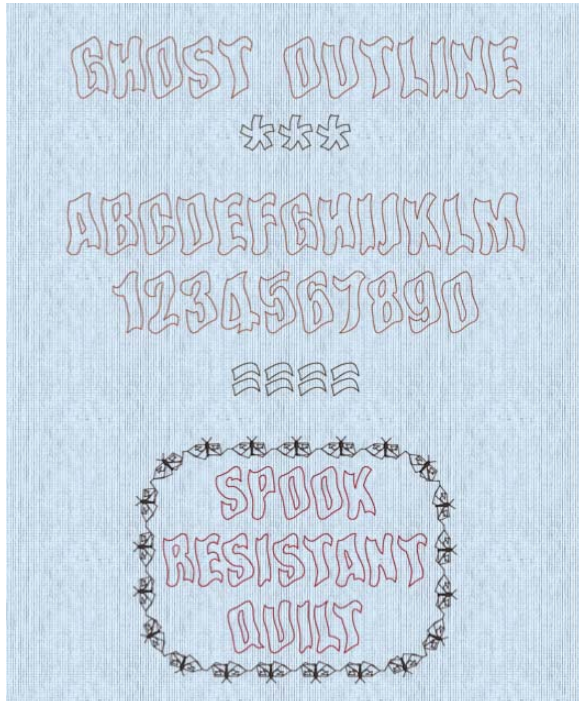


Zephyros 35-55mm
Satin Column, Running Stitch



Zephyros 55-80mm
Satin Column, Running Stitch

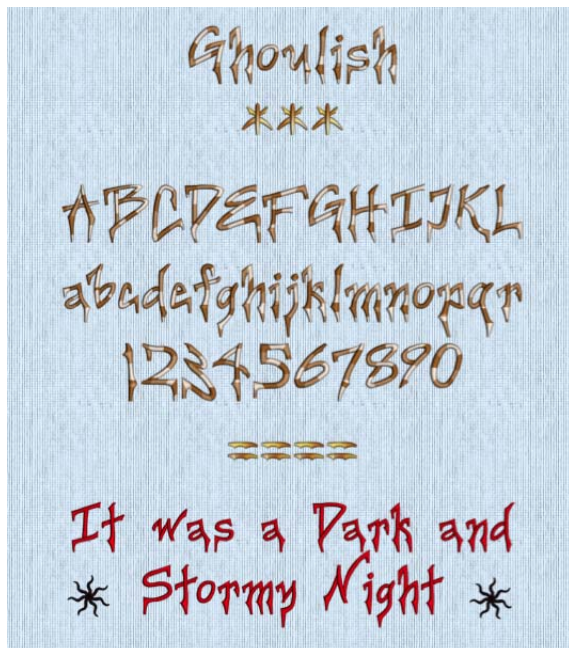
Scary Category



Ghost Outline 15-50mm
Triple Stitch



Ghost UC 15-100mm
Pattern Fill



Ghoulish 18-36mm
Satin Column



Halloween 15-100mm
Pattern Fill



Quiver 20-45mm
Satin Column



Scratches 15-60mm
Running Stitch

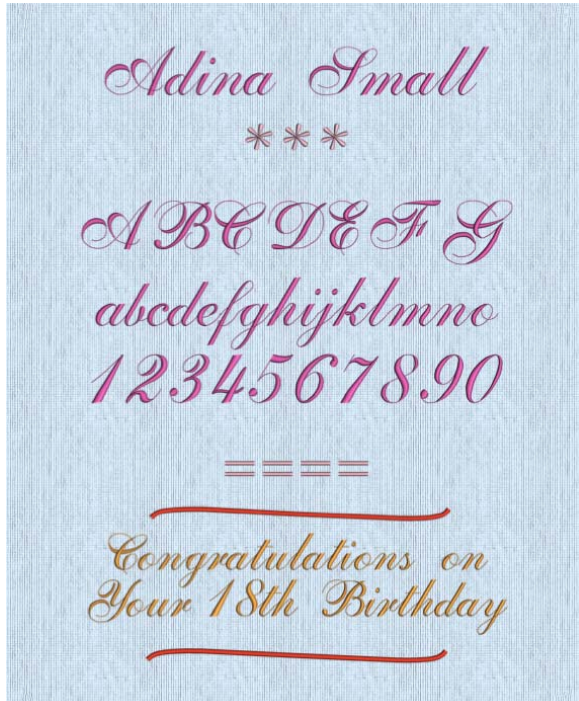


Spooky Outline UC 15-50mm
Triple Stitch



Spooky UC 15-100mm
Pattern Fill

Script Category



Adina 12-40mm

Satin Column, Running Stitch, Double Stitch, Triple Stitch



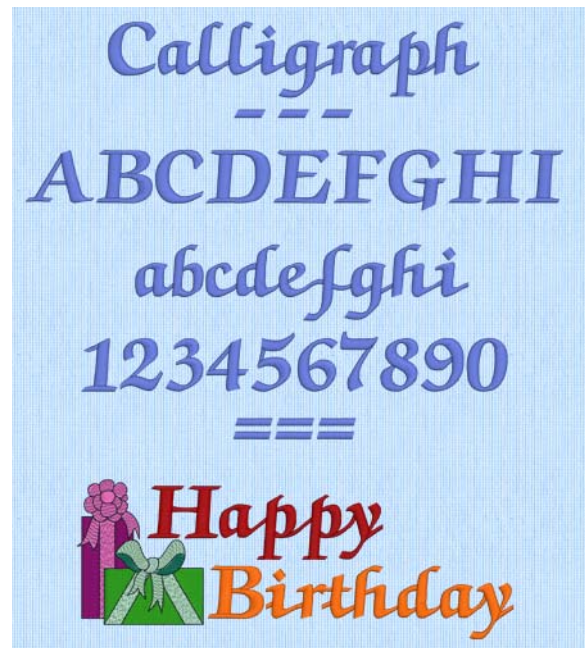
Adina 25-100mm

Satin Column, Running Stitch, Double Stitch, Triple Stitch



Braid 30-80mm

Satin Column

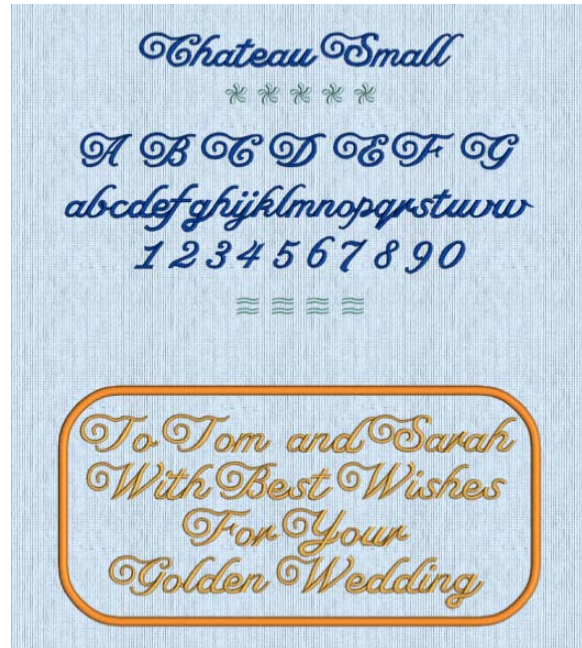


Calligraph 15-50mm

Satin Column



Casual 17-35mm
Satin Column



Chateau 12-20mm
Satin Column



Chateau 20-30mm
Satin Column



Chateau Uniform 20-30mm
Satin Column



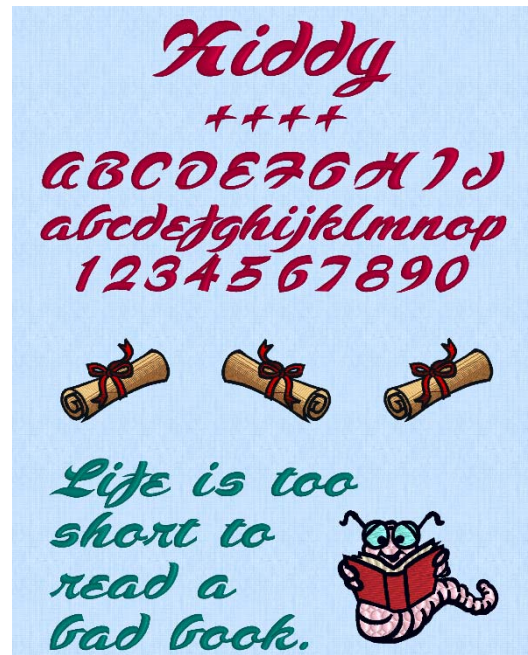
Fable Brush 10-20mm
Satin Column, Triple Stitch, Double Stitch



Fable Brush 20-40mm
Satin Column, Triple Stitch, Double Stitch



Freeway 20-50mm
Satin Column, Running Stitch



Kiddy 20-40mm
Satin Column, Running Stitch



Line Script 4-20mm
 Non-editable



Lydia 15-30mm
 Satin Column



Lydia 30-60mm
 Satin Column



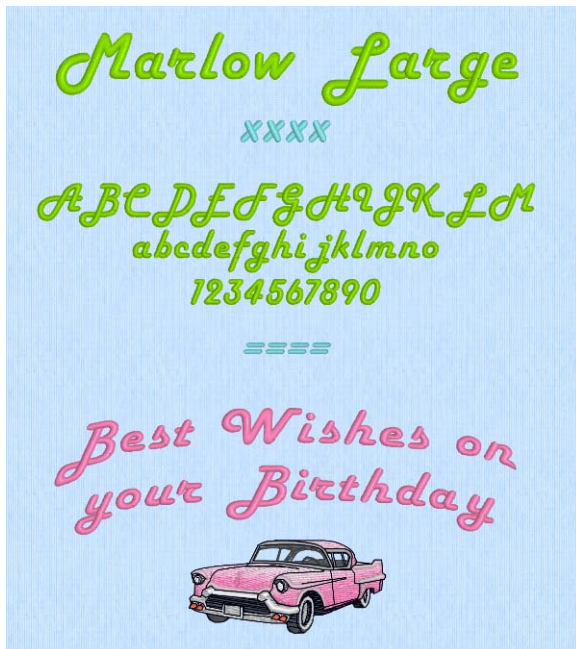
Lyra 15-50mm
 Running Stitch, Triple Stitch



Lyra 25-70mm
Running Stitch, Triple Stitch



Marlow 10-15mm
Satin Column



Marlow 15-40mm
Satin Column



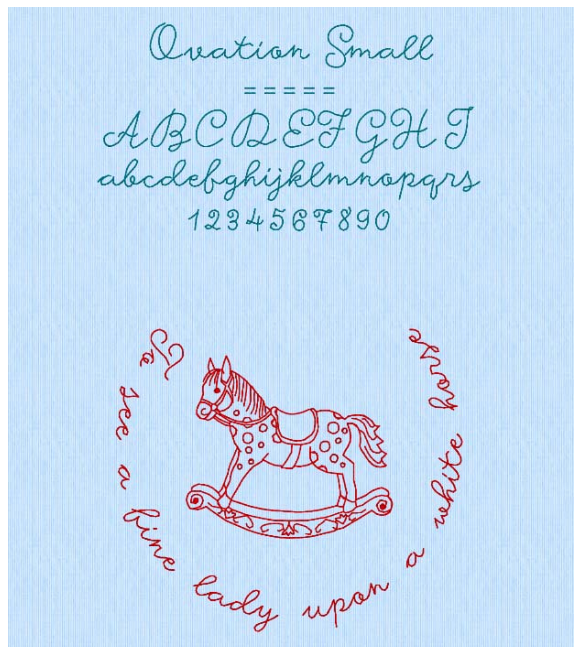
Nimbus 15-45mm



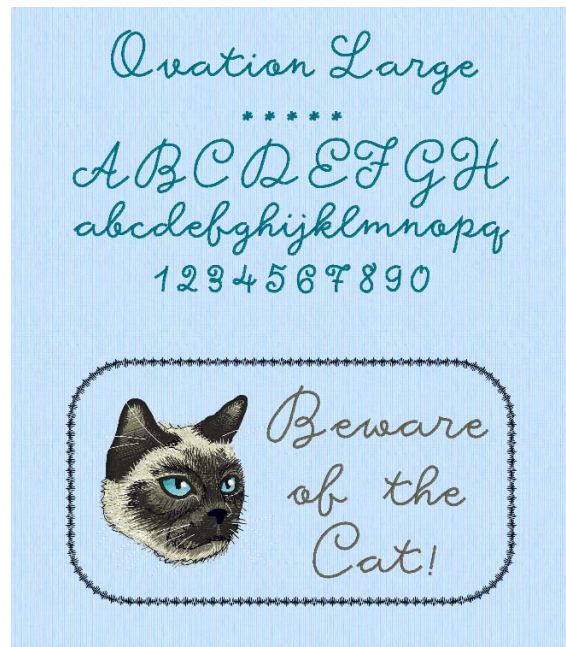
Nova 12-25mm
 Satin Column, Running Stitch



Nova 25-75mm
 Satin Column, Running Stitch



Ovation 12-30mm
 Running Stitch, Triple Stitch



Ovation 30-60mm
 Satin Line, Running Stitch



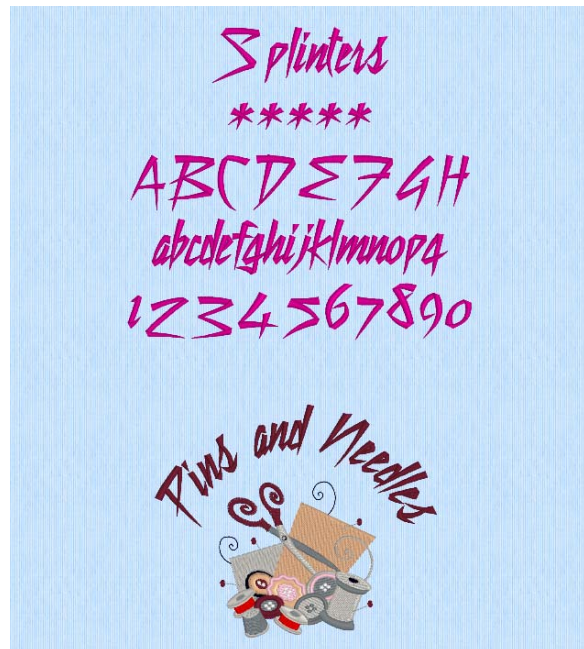
Palace 12-24mm
Satin Column



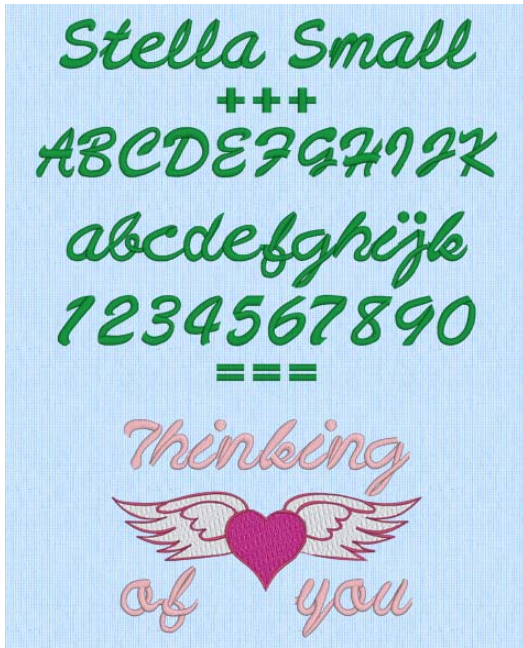
Park 30-45mm
Satin Column



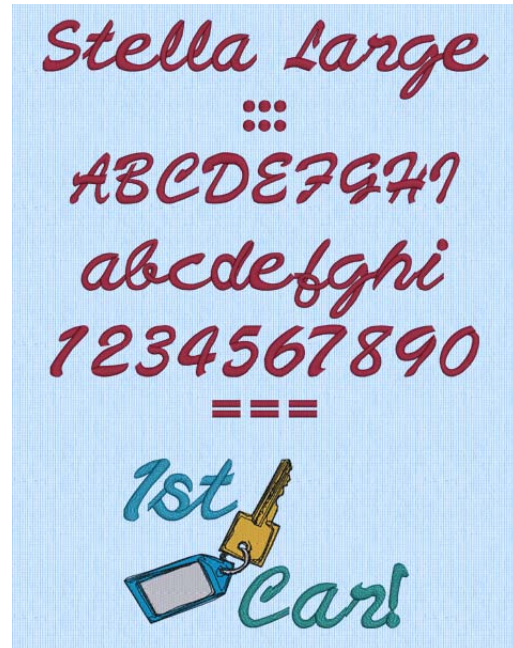
Patricia 10-35mm
Satin Column



Splinters 30-60mm
Satin Column



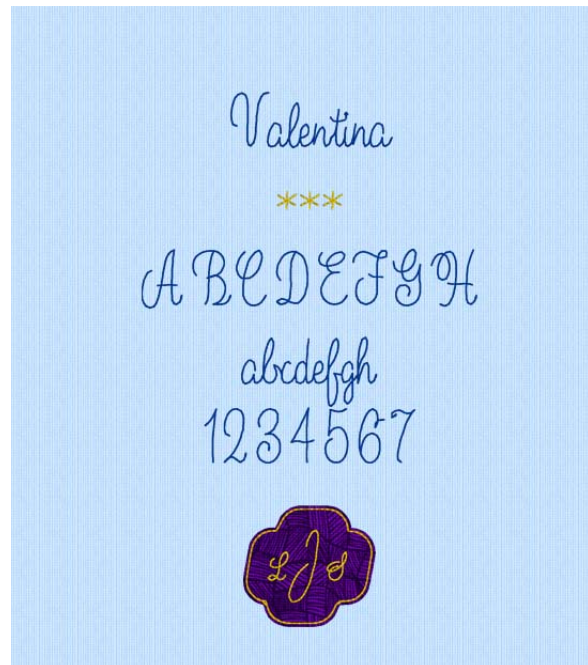
Stella 07-20mm
Satin Column



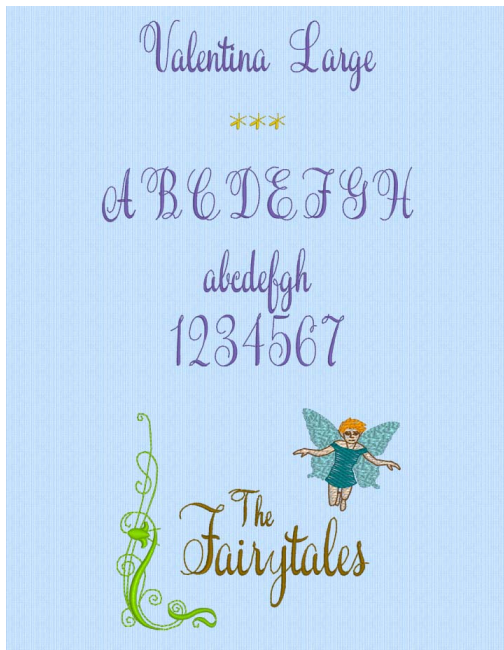
Stella 15-35mm
Satin Column



Tango 25-70mm
Satin Column, Double Stitch, Running Stitch

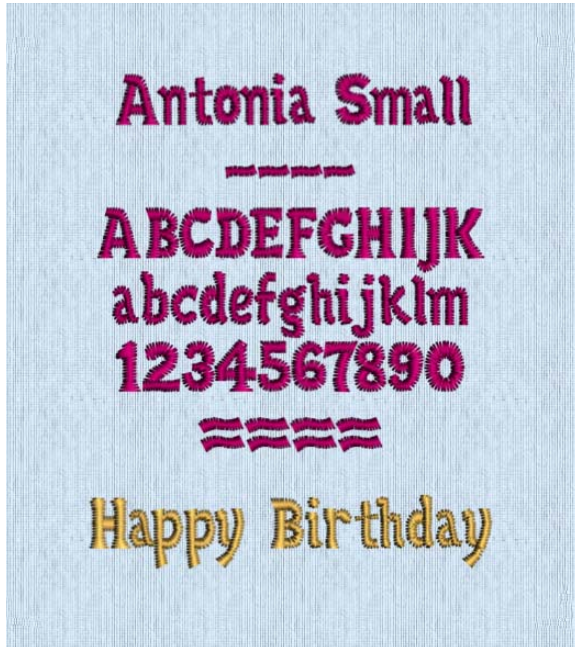


Valentina 08-15mm
Triple Stitch, Double Stitch



Valentina 12-40mm
Satin Column, Triple Stitch, Double Stitch

Traditional Category



Antonia 05-10mm
Satin Column



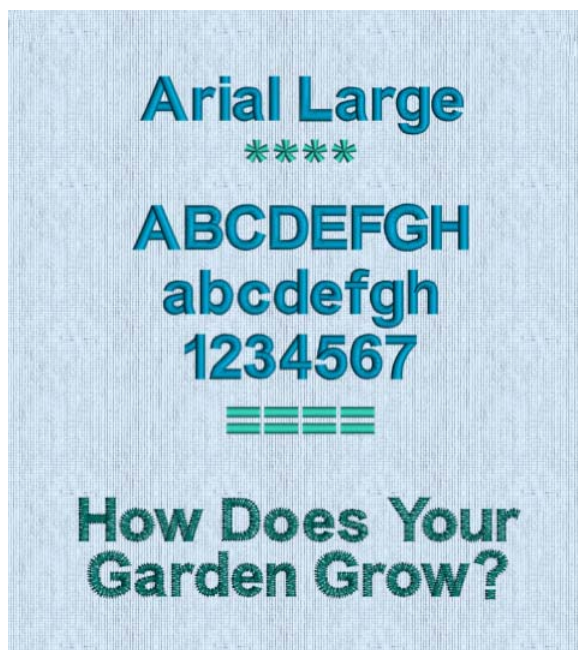
Antonia 10-20mm
Satin Column



Antonia 15-35mm
Satin Column



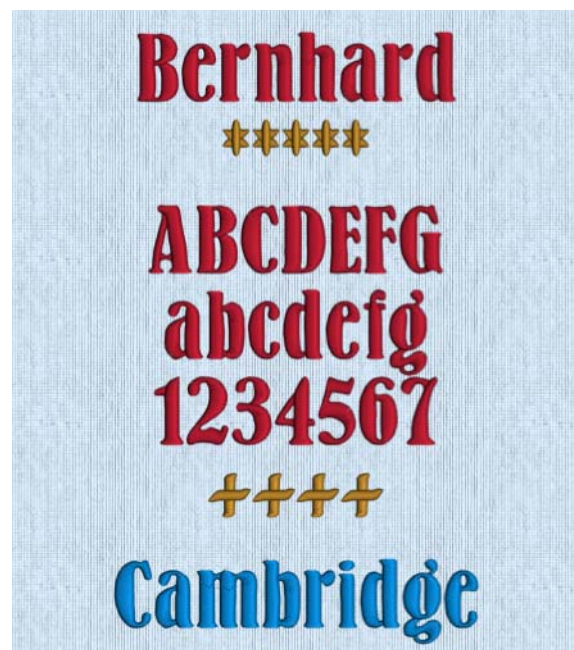
Arial 08-14mm
Satin Column



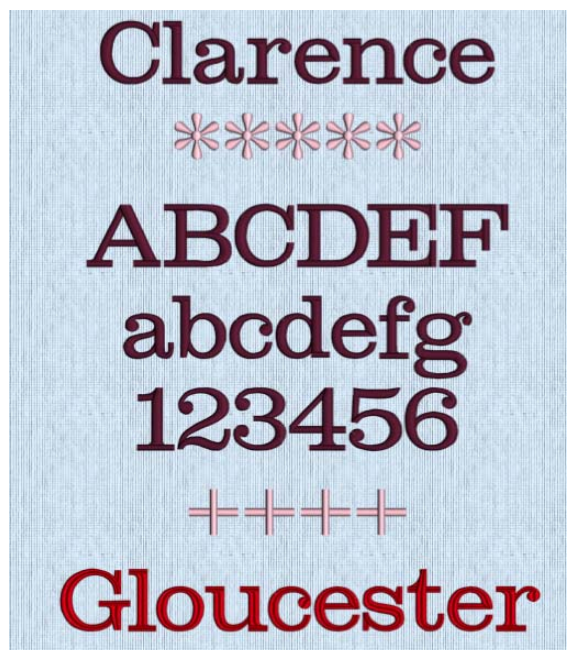
Arial 14-20mm
Satin Column



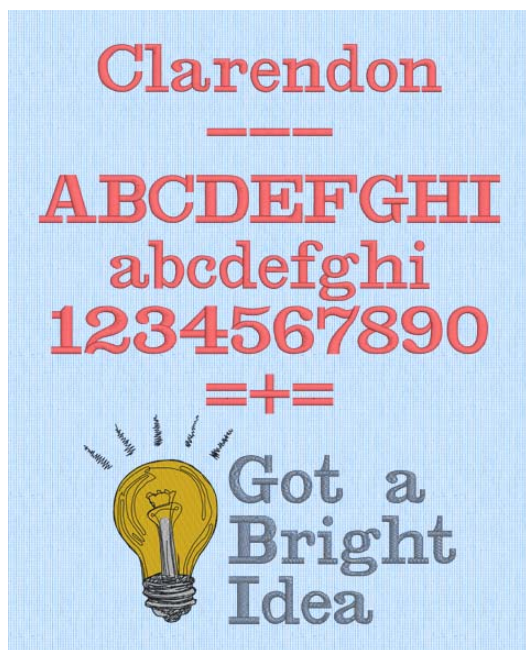
Avantgarde 05-30mm
Satin Column, Running Stitch



Bernhard 15-35mm
Satin Column



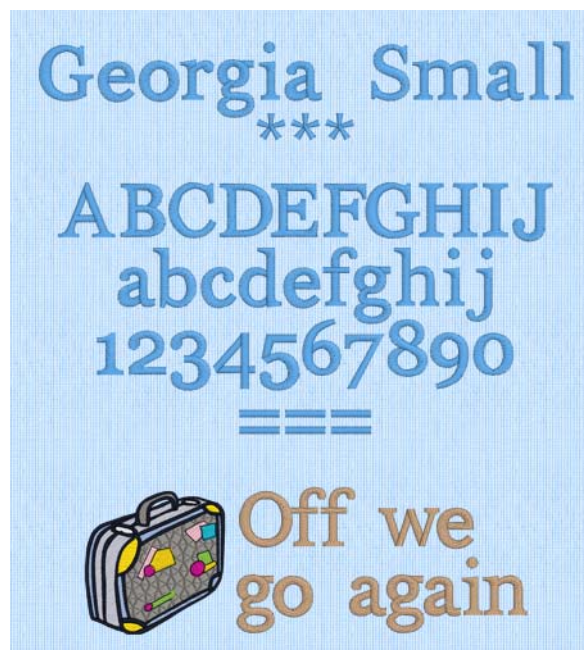
Clarence 10-45mm
Satin Column



Clarendon 12-30mm
Satin Column



Fine Corsiva 6-10mm
Satin Column



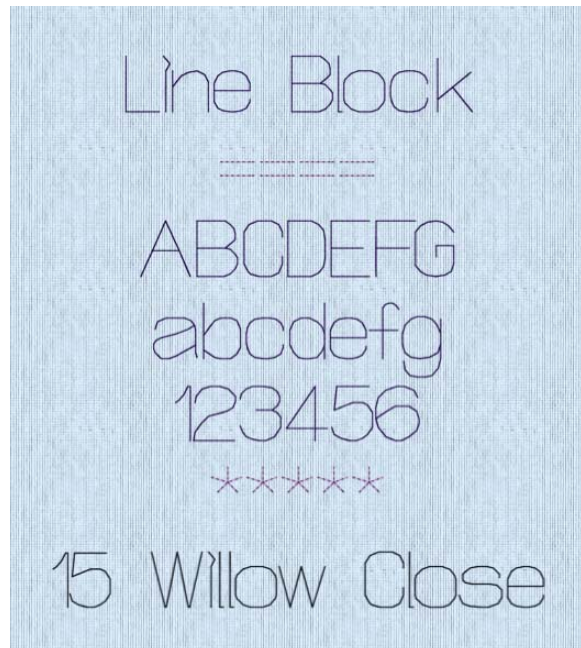
Georgia 08-20mm
Satin Column



Georgia 20-40mm
Satin Column



Italic 7-40mm
 Satin Column



Line Block 3-20mm
 Non-editable



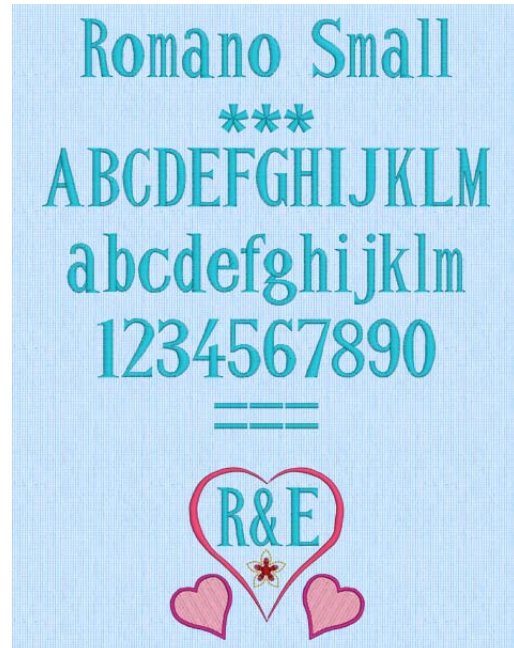
Micro 8-50mm
 Double Stitch, Running Stitch



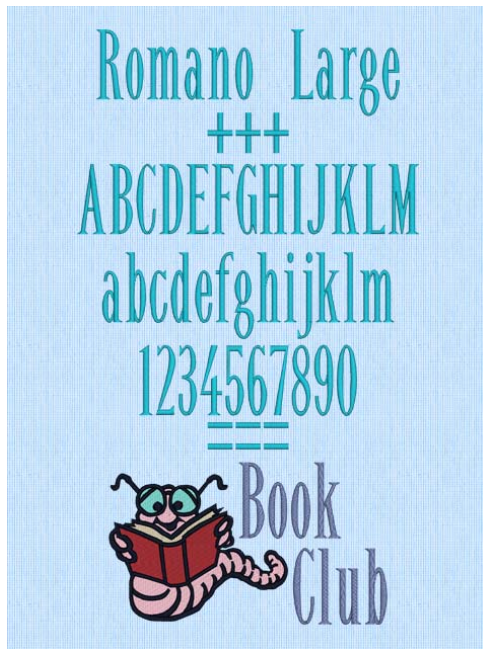
Narrow Block 6-10mm
 Satin Column



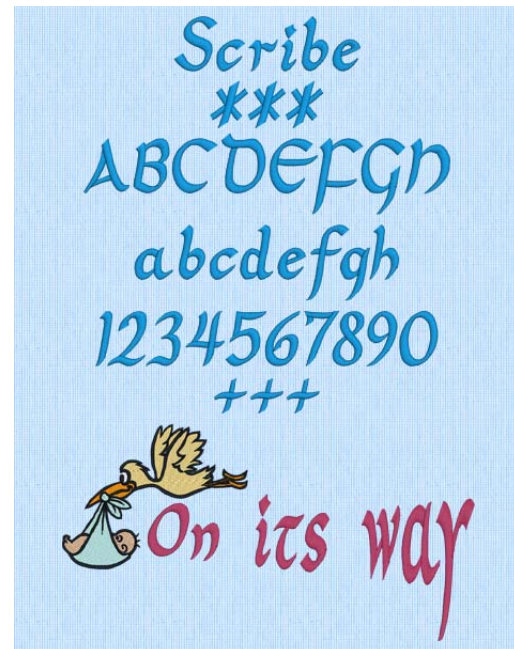
President 20-90mm
Satin Column



Romano 14-35mm
Satin Column, Running Stitch



Romano 35-70mm
Satin Column, Running Stitch



Scribe 15-50mm
Satin Column



Scribe Outline 15-50mm
 Triple Stitch



Story UC 15-30mm
 Satin Column, Running Stitch



Story UC 25-60mm
 Satin Column, Running Stitch

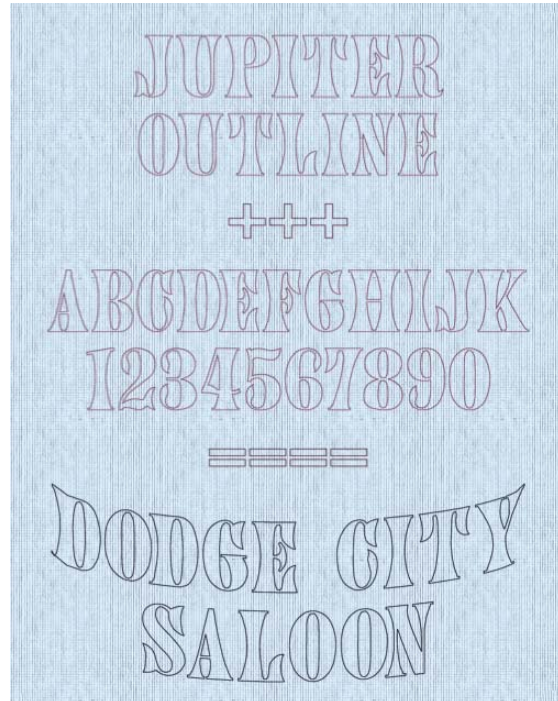


Tital 9-40mm
 Satin Column

Wild West Category



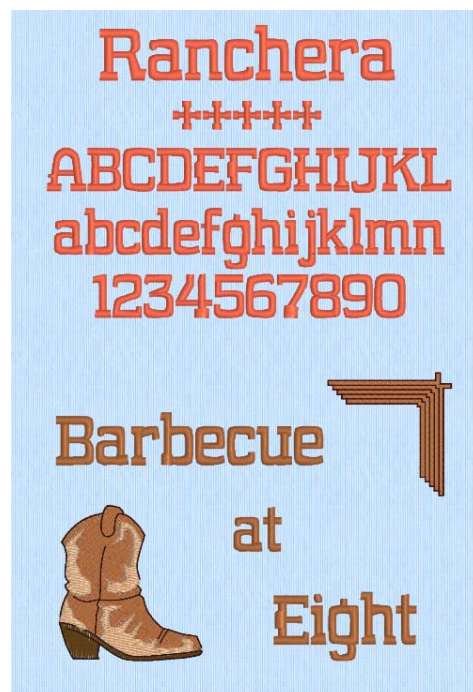
Decor 2C UC 45-100mm
Satin Column, Pattern Fill



Jupiter Outline UC 20-60mm
Triple Stitch



Jupiter 40-100mm
Pattern Fill



Ranchera 15-50mm
Satin Column, Running Stitch



Rosemary 2C 45-120mm
Satin Column, Running Stitch



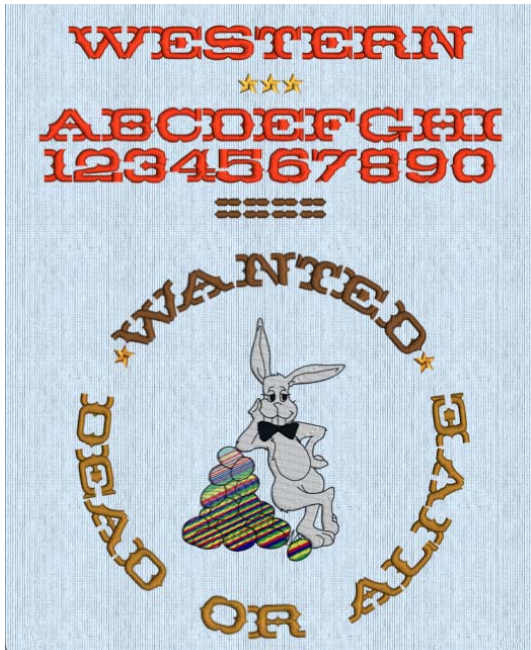
Rosemary Outline 45-120mm
Triple Stitch



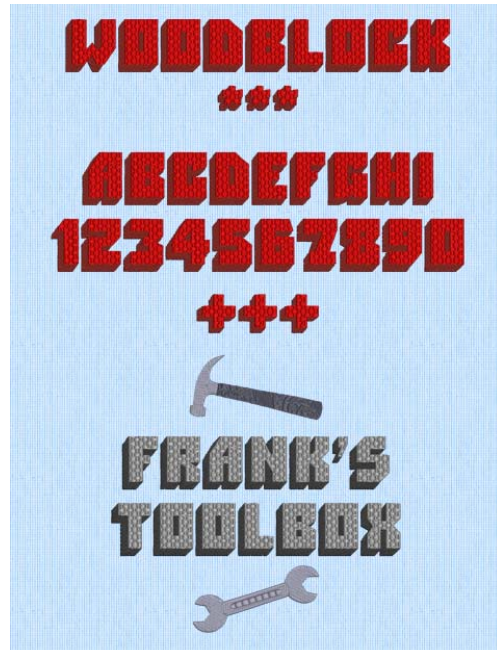
Shotgun Outline UC 30-100mm
Triple Stitch



Shotgun UC 25-100mm
Pattern Fill



Western UC 10-35mm
Satin Column



Woodblock UC 30-100mm
Pattern Fill